

Durham Research Online

Deposited in DRO:

27 November 2012

Version of attached file:

Accepted Version

Peer-review status of attached file:

Peer-reviewed

Citation for published item:

Rice, N. J. and McIntosh, R. D. and Schindler, I. and Mon-Williams, M. and Démonet, J.-F. and Milner, A. D. (2006) 'Intact automatic avoidance of obstacles in patients with visual form agnosia.', *Experimental brain research.*, 174 (1). pp. 176-188.

Further information on publisher's website:

<http://dx.doi.org/10.1007/s00221-006-0435-5>

Publisher's copyright statement:

The original publication is available at www.springerlink.com

Additional information:

Use policy

The full-text may be used and/or reproduced, and given to third parties in any format or medium, without prior permission or charge, for personal research or study, educational, or not-for-profit purposes provided that:

- a full bibliographic reference is made to the original source
- a [link](#) is made to the metadata record in DRO
- the full-text is not changed in any way

The full-text must not be sold in any format or medium without the formal permission of the copyright holders.

Please consult the [full DRO policy](#) for further details.

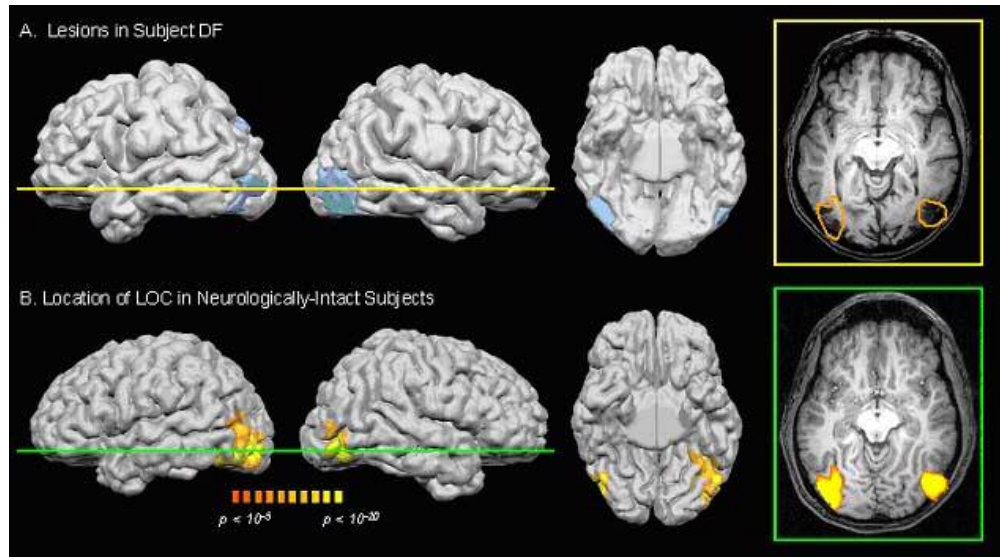


Figure 1. Ventral stream lesions in patient D.F. shown in comparison with the expected location of the lateral occipital complex in healthy subjects, taken from MRI scan data. (A) D.F.'s brain has been rendered at the pial surface (outer grey matter boundary). Lesions were traced on slices that indicated tissue damage, and rendered on the pial surface in pale blue. Lateral views of the left and right hemispheres are shown, as is a ventral view of the underside of the brain. The rightmost image shows a slice through the lesions ($z = \pm 8$). (B) The expected location of LOC based on group data from seven neurologically intact participants is shown on one individual's pial surface and on a slice through the $z = \pm 8$ plane. The activation in the slice is outlined in orange in panel A for comparison with the lesions in D.F.'s brain. (Reproduced with permission from James et al. 2003).

view

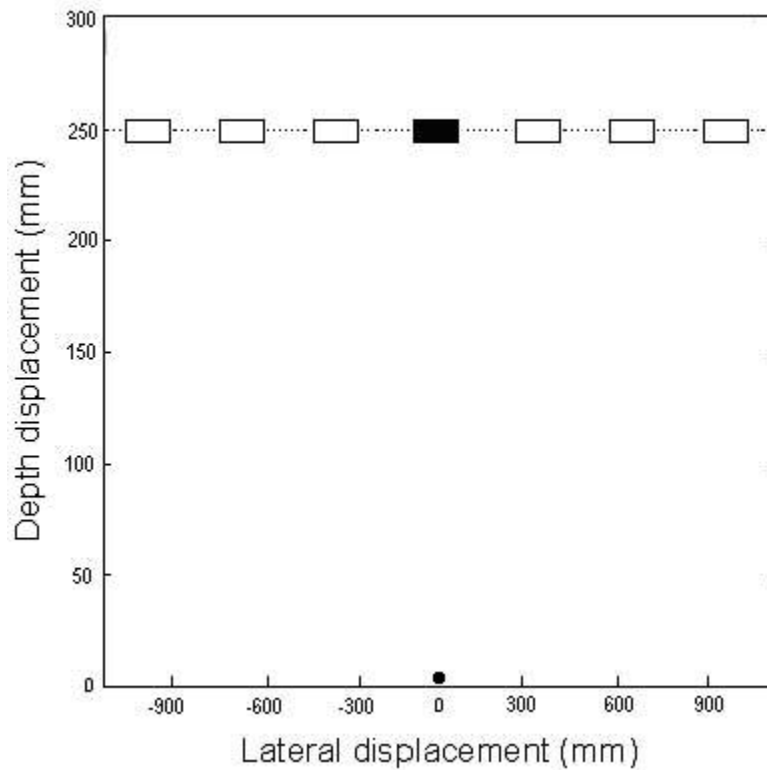


Figure 2. The experimental arrangement used in Experiment 1. The start position is shown as a filled black circle, the target as a filled rectangle, and the six possible obstacle locations as empty rectangles.

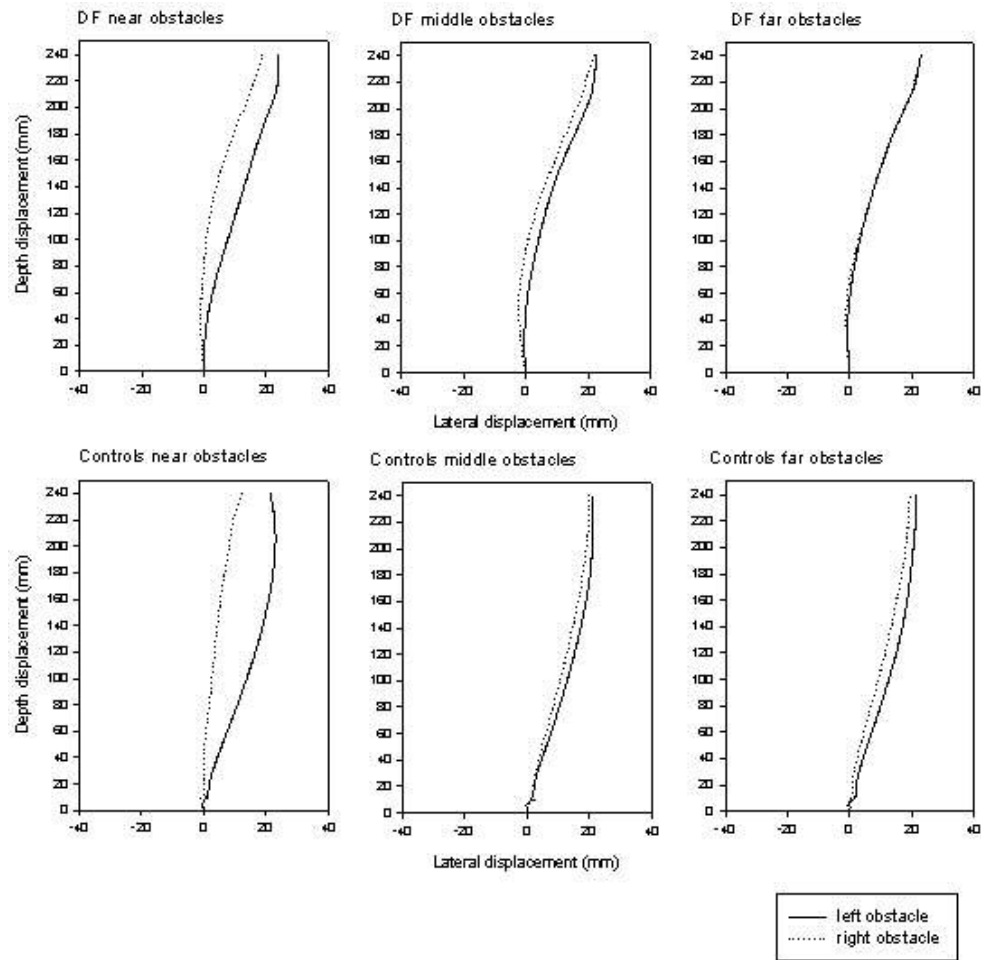


Figure 3. Experiment 1: Graphs depicting the reach trajectories (normalized for start position) taken by D.F. (top 3 graphs) and controls (bottom 3 graphs) for each of the 3 obstacle locations. The solid line represents reach trajectories when the obstacle was present on the left and the broken line represents reach trajectories when the obstacle was on the right.

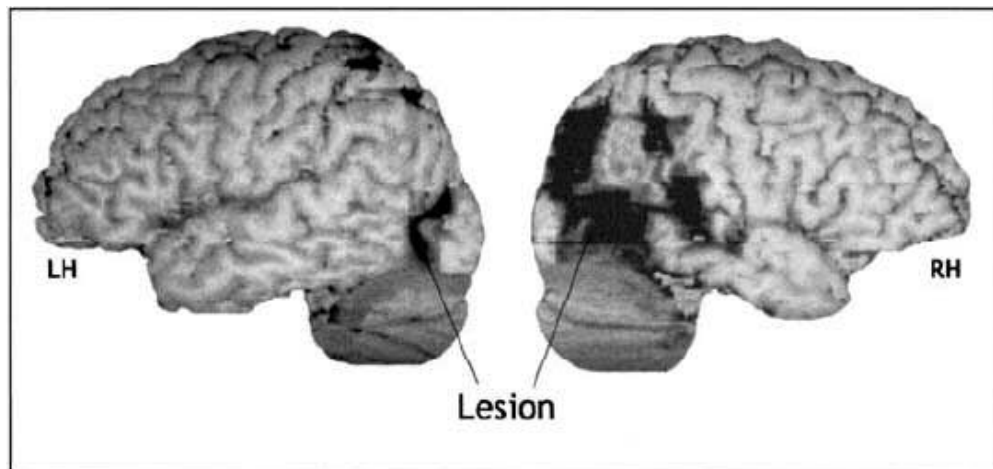


Figure 4. The lesion sites in patient S.B., as reconstructed from MRI scan data. (Reproduced with permission from Lé et al. 2002).

1
2
3
4
5
6
7
8
9
10
11
12
13
14
15
16
17
18
19
20
21
22
23
24
25
26
27
28
29
30
31
32
33
34
35
36
37
38
39
40
41
42
43
44
45
46
47
48
49
50
51
52
53
54
55
56
57
58
59
60

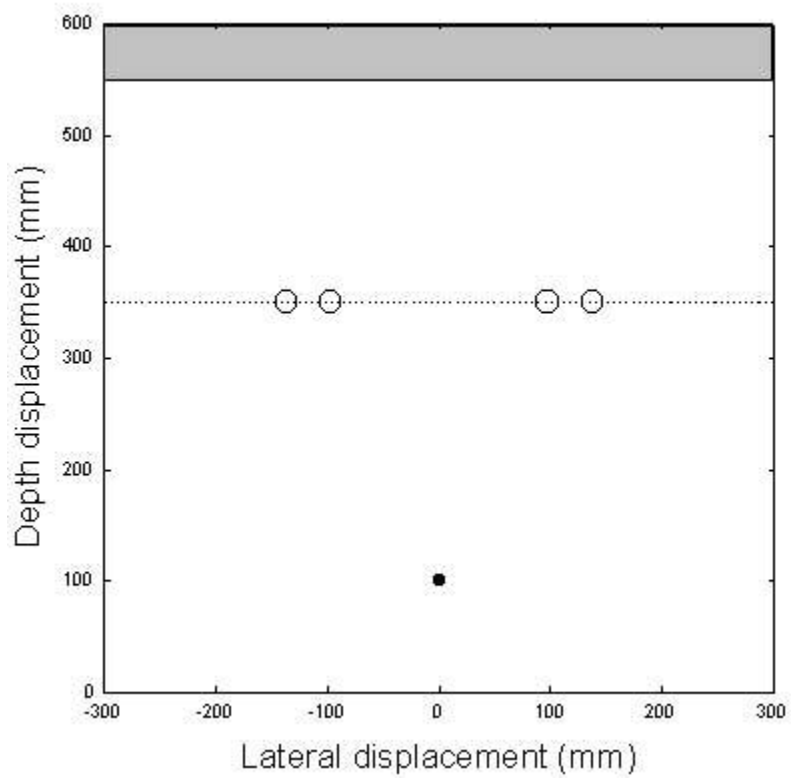


Figure 5. The experimental arrangement used in Experiment 2. The start button is shown as a filled black circle, and the possible locations of the two cylindrical non-target objects are shown as open circles. The target zone is shown in grey at the far edge of the board. A strip of white card was placed between the two cylinders on every trial to cover the unused holes.



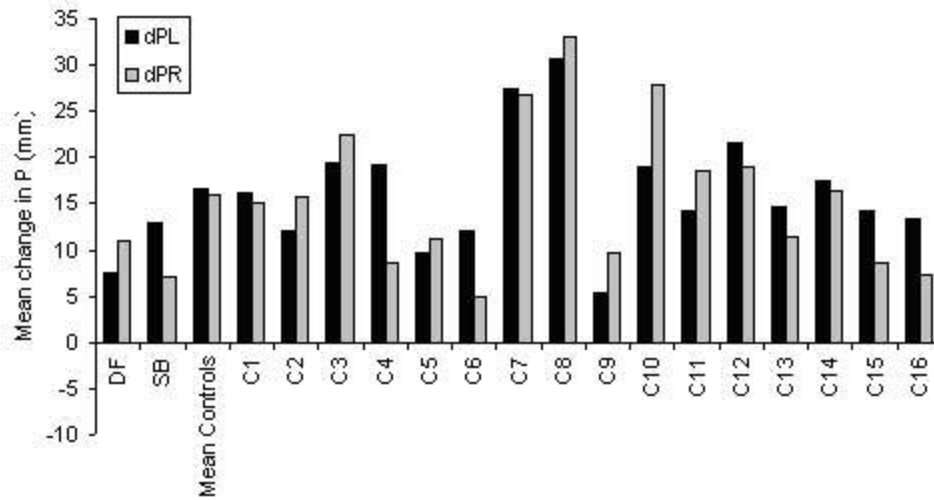


Figure 6. The 'weightings' (dPL and dPR) given to each cylinder by D.F. and S.B. and the controls in the reaching task. These values indicate the extent to which each subject takes the left or right cylinder's location into account when performing the task.

1
2
3
4
5
6
7
8
9
10
11
12
13
14
15
16
17
18
19
20
21
22
23
24
25
26
27
28
29
30
31
32
33
34
35
36
37
38
39
40
41
42
43
44
45
46
47
48
49
50
51
52
53
54
55
56
57
58
59
60

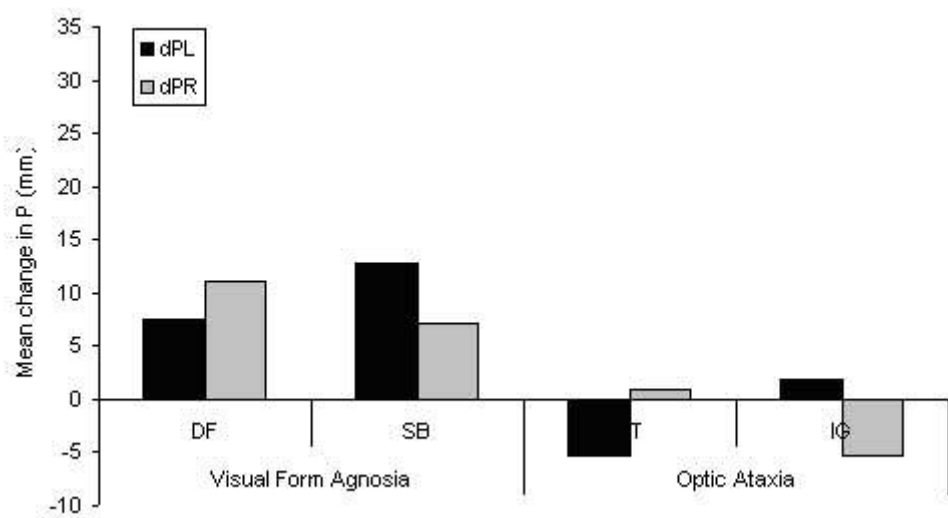


Figure 8. The weightings given to the two cylinders by our two visual form agnosic patients (D.F. and S.B.) and by optic ataxic patients A.T. and I.G. (Schindler et al. 2004) in the reaching task.

Review

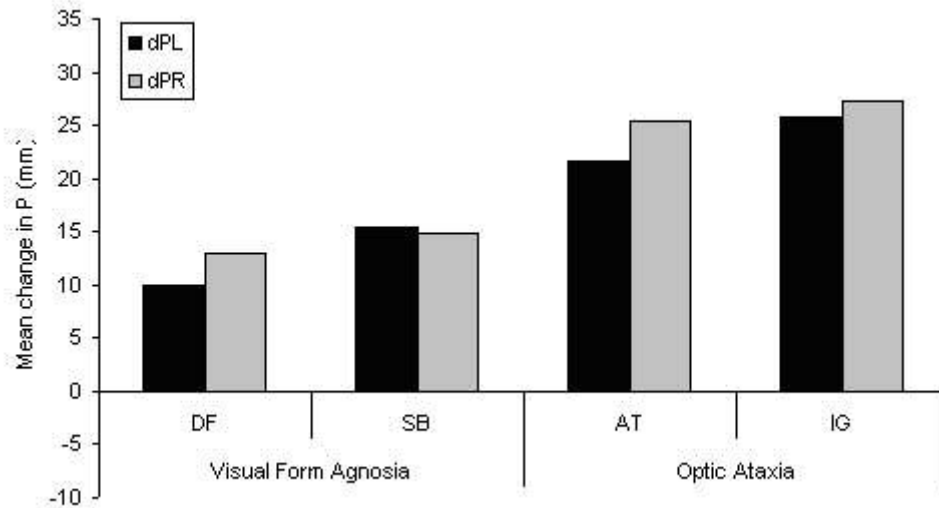


Figure 9. The weightings given to the two cylinders by our two visual form agnosic patients (D.F. and S.B.) and by patients A.T. and I.G. (Schindler et al. 2004) in the bisection task.

1
2
3
4
5
6
7
8
9
10
11
12
13
14
15
16
17
18
19
20
21
22
23
24
25
26
27
28
29
30
31
32
33
34
35
36
37
38
39
40
41
42
43
44
45
46
47
48
49
50
51
52
53
54
55
56
57
58
59
60

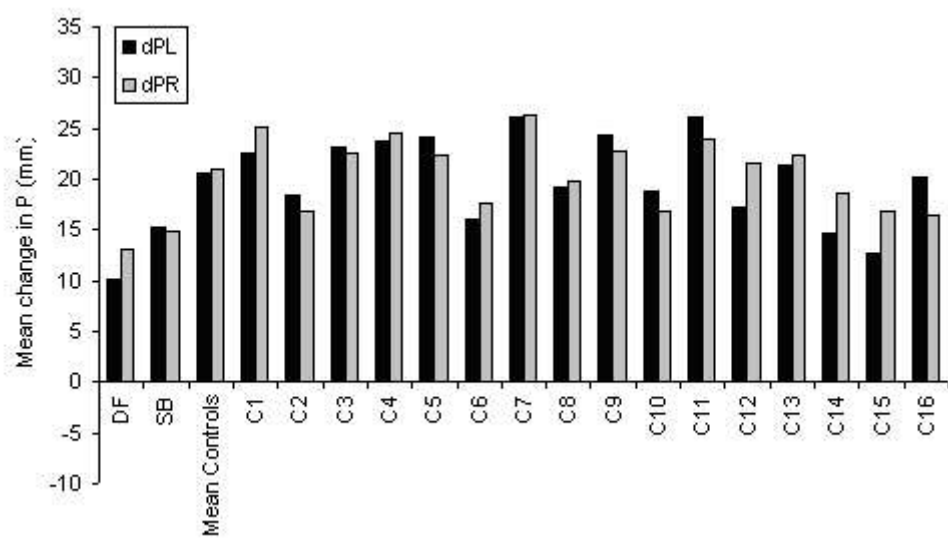


Figure 7. The 'weightings' given to each cylinder by D.F. and S.B. and the controls in the bisection task.

Review

Revised submission February 2006.

Intact automatic avoidance of obstacles in patients with visual form agnosia

Nichola J. Rice^{1,6}, Robert D. McIntosh², Igor Schindler³, Mark Mon-Williams⁴, Jean-François Démonet⁵, and A. David Milner¹.

¹Cognitive Neuroscience Research Unit
Wolfson Research Institute
University of Durham, Queen's Campus
Stockton-on-Tees, TS17 6BH, UK.

²School of Philosophy, Psychology and Language Sciences
University of Edinburgh
7 George Square
Edinburgh, EH8 9JZ, UK.

³Department of Psychology
University of Hull
Cottingham Road
Hull, HU6 7RX, UK.

⁴School of Psychology
William Guild Building
University of Aberdeen
Aberdeen, AB24 2UB, UK

⁵INSERM U455
Federation of Neurology
CHU Purpan
F-31059 Toulouse Cedex, France.

⁶The first author is now at:
Center for Cognitive Neuroscience
Dartmouth College
Hanover NH 03755, USA

Number of text pages, including figures and tables: 40

Number of figures and tables: 9

Corresponding author:

Professor A.D. Milner
Phone: (44-) 191-334-0433
Fax: (44-) 191-334-0452
Email: a.d.milner@durham.ac.uk

Abstract

In everyday life our reaching behaviour has to be guided not only by the location and properties of the target object, but also by the presence of potential obstacles in the workspace. Recent evidence from neglect and optic ataxia patients has suggested that this automatic obstacle avoidance is mediated by the dorsal, rather than the ventral, stream of visual processing. We tested this idea in two studies involving patients with visual form agnosia resulting from bilateral ventral-stream damage. In the first study, we asked patient D.F. to reach out and pick up a target object in the presence of obstacles placed at varying distances to the left or right of the target. We found that both D.F. and controls shifted their trajectories away from the potential obstacles and adjusted their grip aperture in such a way as to minimize risk of collision. In a second study, we asked D.F. and a second patient, S.B., to either reach between, or to bisect the space between, two cylinders presented at varying locations. We found that both patients adjusted their reach trajectories to account for shifts in cylinder location in the reaching task, yet showed significantly worse performance than control subjects when asked to make a bisection judgement. Taken together, these data indicate that automatic obstacle avoidance behaviour is spared in our patients with visual form agnosia. We attribute their ability to the functional intactness of the dorsal stream of visual processing, and argue that the ventral stream plays no important role in automatic obstacle avoidance.

1. Introduction

In everyday life we automatically tailor our movements so as to prevent collisions with potential obstacles in our workspace. In the laboratory similar behaviours have been observed. For example, Jackson and colleagues [12] found that the placement of non-target objects in the workspace caused changes in both the transport and grasp components of a reach, especially when performed in visual open loop conditions (i.e. when visual feedback is denied). In other studies, it was reported that even a non-target LED would cause reaching movements to veer away from the LED [11, 29]. Although the authors conceptualized this effect as a kind of attentional repulsion, in functional terms it may reflect a failsafe mechanism to maintain sight of potential obstacles in order to minimize the likelihood of colliding with them. This failsafe mechanism may be automatically recruited even when there is no actual physical risk of collision. Tresilian [32] presented data in support of this interpretation, arguing that both the grasp and transport components of prehension movements are adjusted to avoid potential obstacles. Tresilian proposed that people move so as to avoid the hand coming within a minimum preferred distance from non-target objects within the workspace.

More recently, Mon-Williams and McIntosh [26] have shown that as the distance between two flanking obstacles gets smaller, movement time to grasp a target object increases, according to a quasi-Fitts' Law function [7]. In a further investigation, Mon-Williams, Tresilian and colleagues [27] found that the presence of obstacles during a reach to grasp task caused both increases in movement time and decreases in maximum grip aperture, but in varying proportions depending on the layout of the workspace. They suggested that their findings indicate a flexible control

1
2
3 strategy in which movements are adjusted to avoid collision with obstacles in a subtle
4
5 and precise manner.
6

7
8 Until very recently, there have been no investigations directed at
9
10 understanding the neural underpinnings of these various aspects of non-target
11
12 processing in goal directed reaching. In contrast, a host of neurobehavioural and
13
14 neurophysiological studies are in agreement that the visual control of target-directed
15
16 reaching and grasping depends upon systems in the dorsal stream of cortical
17
18 processing [8, 14, 22]. Nevertheless, non-target processing clearly plays an important
19
20 role in determining the parameters of reaching and grasping movements. One of the
21
22 first studies of non-target processing following brain damage was performed by
23
24 McIntosh and colleagues [18]. They tested 12 neglect patients and 12 healthy control
25
26 subjects on a bisection task and a reaching task, in both cases using the same spatial
27
28 layout. Subjects were presented with two cylinders, one on the left and one on the
29
30 right, each of which could be located in one of two positions. In the bisection task
31
32 they were required to judge the midpoint between the two cylinders by making a
33
34 pointing response, while in the reaching task they were required to touch a wide target
35
36 zone located beyond the two cylinders, by reaching between them. The former can be
37
38 regarded as an explicit bisection task, while the latter is an implicit one. The results
39
40 showed that 10 out of the 12 neglect patients performed similarly to controls on the
41
42 reaching task, taking full account of both cylinder locations as they carried out the
43
44 movements. This result contrasted with their behaviour in the bisection task, where
45
46 the patients took little account of the varying locations of the left cylinder when
47
48 making their spatial judgements. McIntosh et al [18] argued that this preservation of
49
50 non-target processing during reaching in most neglect patients might be due to the
51
52 sparing of dorsal-stream cortex in and around the intraparietal cortex [6]. The
53
54
55
56
57
58
59
60

1
2
3 implication of their argument was that the two patients who did not show such a
4 preservation must have had lesions that included concomitant damage to dorsal stream
5 areas.
6
7
8
9

10 These results suggest that the adjustments made to reaching movements with
11 respect to potential obstacles are not subject to the same neglect of leftward objects to
12 which conscious bisection judgements are prone. They do not, of course, show that
13 the patients were taking the left cylinder into account without being visually *aware* of
14 it. The patients were free to move their eyes and no attempt was made to discover
15 what they saw or did not see. Therefore in a separate study [19], a patient with visual
16 extinction was tested in a comparable reaching task. Instead of 2-cm wide cylinders,
17 thin poles were used, and they were visible only briefly: by this means it was possible
18 to induce extinction of the left pole on about half of the test trials. On different trials,
19 either the left pole alone, the right pole alone, both, or neither of the poles was
20 present. The results showed that the patient took significantly different reaching
21 routes according to whether the left, right, or both poles were present, much as healthy
22 control subjects did. Moreover, his reach trajectories when both poles were present
23 were identical on trials where he reported seeing the left pole and on those when he
24 reported not seeing it.
25
26
27
28
29
30
31
32
33
34
35
36
37
38
39
40
41
42
43
44

45 Taken together, the results of these two studies are consistent with the
46 hypothesis that obstacle avoidance is subserved by the same superior parietal
47 networks as the *target-directed* aspects of reaching, and that this processing does not
48 require conscious awareness of the potential obstacles [24]. More direct evidence for
49 this hypothesis was obtained in a third study in which two patients with optic ataxia,
50 resulting from bilateral lesions of the dorsal stream, were tested on essentially the
51 same two tasks used by McIntosh et al. [18]. In this study [28], the optic ataxic
52
53
54
55
56
57
58
59
60

1
2
3 patients failed completely to shift their trajectories with respect to any changes in
4
5 cylinder location in the reaching task, while taking full account of shifts of both
6
7 cylinders when required to bisect the space between them. These patients thus
8
9 exhibited the opposite pattern to that typically seen in neglect patients.
10
11

12
13 The results of these studies fit well within the framework of our current
14
15 functional understanding of the ventral and dorsal processing streams [8, 22]. That is,
16
17 like target-directed reaching and grasping movements, it can be proposed that
18
19 automatic obstacle avoidance is a dorsal stream function (abolished when superior
20
21 parietal cortex is damaged, as in optic ataxia, but typically preserved in neglect, where
22
23 the damage is predominantly temporo-parietal). Bisection, on the other hand, depends
24
25 on a conscious strategy which optic ataxic patients can implement using perceptual
26
27 information processed within their ventral stream and its right temporo-parietal
28
29 elaboration; both of which may remain largely intact. A prediction from this
30
31 interpretation is that while damage to the ventral stream itself might be expected to
32
33 impair gap bisection to some degree (assuming that it provides an important input
34
35 route to the temporo-parietal region damaged in neglect), it should entirely spare
36
37 obstacle avoidance.
38
39
40
41
42

43
44 In contrast to optic ataxia, visual form agnosia is associated with damage to
45
46 the ventral stream of processing. Benson and Greenberg [1] first introduced the term
47
48 *visual form agnosia* when describing a patient (Mr S.) whose recognition deficits they
49
50 believed could be attributed to a primary defect in form discrimination. They
51
52 suggested that the disorder was associated with an intact ability to deal with the
53
54 simple features of an object, but a specific inability to put such features together to
55
56 permit form discrimination and perception. This loss resulted in the patient having a
57
58 severe inability to recognize everyday objects, and particularly drawings of objects,
59
60

1
2
3 by virtue of their shape (see review by Heider [10]). In the present paper we have
4
5 tested a patient with a very similar pattern of visual impairment to Mr S (D.F. [25]),
6
7 who has been extensively studied [see 8, 21]. Recently, James and colleagues [13]
8
9 have shown that D.F. has bilateral posterior cortical damage remarkably coincident
10
11 with the lateral occipital area (area LO: [15, 20]). Indeed, when functional MRI was
12
13 used to examine her brain activation in response to complete versus fragmented line
14
15 drawings of objects, the subtraction of which defines area LO in healthy subjects, no
16
17 net activation was found [13]. It was inferred from these results that it was D.F.'s
18
19 bilateral damage to area LO that was the direct cause of her visual form agnosia, and
20
21 by extension that similar damage is the cause of this impairment in other patients as
22
23 well. In contrast, D.F., as demonstrated in a number of studies [9, 25], has rather well-
24
25 preserved visuomotor control in simple reaching and grasping tasks, which has been
26
27 attributed to a functionally-intact dorsal stream of visual processing [21, 22]. This
28
29 conjecture has now been confirmed using fMRI [5, 13].
30
31
32
33
34
35

36 The aim of the present experiments was to examine obstacle avoidance
37
38 behaviour in visual form agnosia in order to assess the relative contributions of the
39
40 dorsal and ventral streams to automatic obstacle avoidance. We define obstacle
41
42 avoidance as behaviour in which a participant moves a body part over, away from or
43
44 around non-targets, in order to avoid potential collision. (Nonetheless empirical
45
46 evidence suggests that the brain mechanisms controlling such behaviour may also
47
48 sometimes treat stimuli that present no real risk of collision (e.g. LEDs) in a
49
50 qualitatively similar way [33]). Such behaviour should be inversely related to the
51
52 distance between target and obstacle (i.e. the closer the obstacle to the target, the
53
54 greater the effect on performance). In the first experiment D.F. was asked to reach out
55
56 and grasp an object in the presence of a secondary object, placed either to the left or
57
58
59
60

1
2
3 the right of the target, at varying distances. In the second experiment D.F. and a
4
5 second visual form agnostic patient, S.B., were asked to either reach between or bisect
6
7 the space between two cylinders in a manner similar to the previous studies of
8
9 McIntosh et al [18] and Schindler et al. [28]. If automatic obstacle avoidance is
10
11 subserved by the dorsal stream of processing alone, it would be predicted that in the
12
13 first experiment, D.F. would take full account of the obstacle locations relative to the
14
15 target, by systematically shifting her reach trajectories and modifying her grip
16
17 aperture, in the same manner as controls. In the second experiment it was predicted
18
19 that although both patients might show somewhat impaired performance on the
20
21 bisection task due to their damaged ventral streams, they should perform in a similar
22
23 way to normals when required to reach between the two cylinders, given their
24
25 functionally intact dorsal streams. In other words, a partial double dissociation
26
27 between optic ataxic and visual form agnostic patients was predicted on these
28
29 respective perceptual and visuomotor tasks.
30
31
32
33
34
35
36
37
38
39
40

41 **2. Experiment 1**

42 *2.1. Method*

43 *2.1.1. Participants*

44
45 Patient D.F. and six controls took part in the study: three females (average 27.3 years
46
47 old, SD 4.6 years) and three males (average 25.7 years old, SD 2.1 years)¹. All
48
49 participants were right-handed by self-report, had normal or corrected to normal
50
51 vision, and no history of neurological disorders.
52
53
54
55
56
57
58

59 ¹ In Experiment 2 two groups of control participants were tested; one group age-matched to D.F. and
60 one group age-matched to S.B. A comparison between the results of the two control groups reveals no
difference, suggesting that the age difference between them did not affect performance.

1
2
3 D.F. was 43 years old at the time of testing, and had developed visual form
4
5
6
7
8
9
10
11
12
13
14
15
16
17
18
19
20
21
22
23
24
25
26
27
28
29
30
31
32
33
34
35
36
37
38
39
40
41
42
43
44
45
46
47
48
49
50
51
52
53
54
55
56
57
58
59
60

D.F. was 43 years old at the time of testing, and had developed visual form agnosia as a result of carbon monoxide poisoning nine years earlier. She was extensively tested by Milner and colleagues [25], her deficits including a failure to recognize objects visually, and difficulties in discriminating shape, lightness (see also [23]), orientation, symmetry and texture differences. She was also unable to copy drawings or letters, had impoverished reading abilities, and experienced difficulty estimating the speed of objects. Despite these deficits she had preserved visual acuity, colour vision, tactile recognition and verbal intelligence. She could partially describe objects, particularly their surface properties, and could then make reasonable guesses as to what they were. Though finding it difficult to describe her visual experience, she said that objects appeared “blurred” and tended “to run into each other”. EEG showed bilateral abnormalities, most prominent posteriorly and in temporal regions. Early MRI scans showed abnormalities in occipital cortex bilaterally, with the damage extending laterally in the ventral part of the occipital lobe (area 18) and dorsally in the posterior occipitoparietal region, her primary visual cortex remaining intact [25]. A recent study [13] has shown that D.F.’s principal lesions correspond bilaterally with the location of the lateral occipital area (LO) in the ventral stream in healthy subjects (see Figure 1), along with damage to the left posterior parietal cortex.

Figure 1 about here

2.1.2. Apparatus

The equipment used in the present experiment is depicted in Figure 2. Participants placed their index finger and thumb on a start position located directly in front of them. They were presented with a green target object, which was located 25 cm away from the start point, and aligned with their body midline. There were six

1
2
3 possible obstacle locations, either 3, 6 or 9 cm away from the inside edge of the target.
4
5 Both target and obstacle were 3 cm wide, 2 cm deep, 5 cm high. The target was green
6
7 in colour, while the obstacle was always black. Hand movements were recorded using
8
9 *Minibird* (Ascension Technology Ltd), which sampled the positions of two markers
10
11 attached to the index finger and thumb at a frequency of 86.1 Hz. Movements were
12
13 recorded in full (i.e. from initial start position to end of each movement). Recordings
14
15 were filtered at 10 Hz, and the start and end of each movement were defined by a 5
16
17 cm/s threshold, maintained for 10 frames at the start.
18
19
20

21
22 Figure 2 about here
23
24
25

26 27 *2.1.3. Procedure*

28
29 The experiment consisted of a simple grasping task performed in free vision.
30
31 Subjects were asked to reach out and grasp the target object as quickly as possible
32
33 using the right hand. There were seven different conditions. In one, the target was
34
35 presented alone, while in each of the other 6 conditions, the obstacle was present
36
37 alongside the target object. On each trial, the subject was cued to respond by a verbal
38
39 “go” signal given by the experimenter. Each subject performed a block of 56 trials,
40
41 with eight trials per condition presented in a fixed pseudo-random order. The data
42
43 were processed using custom written Labview programs (National Instruments Inc.).
44
45
46
47
48
49

50 51 *2.2. Results*

52 53 *2.2.1 Analysis*

54
55 The average x-y trajectory of the index finger and thumb was computed for
56
57 each condition in which there was an obstacle present for both D.F. and controls. The
58
59 x trajectory refers to the left / right movement with respect to the observer, and the y
60

1
2
3 trajectory refers to the forward / backward movement. These trajectories were
4
5 normalized to the start position (which varied slightly from trial to trial) and then
6
7 modified t-tests, recommended by Crawford and Garthwaite [4] were used to compare
8
9 D.F. to the controls at 1 cm intervals throughout the movement in each of the
10
11 conditions.
12
13

14
15 In addition, the following kinematic variables were computed and used for
16
17 analysis: maximum grip aperture, movement time, peak velocity, time to maximum
18
19 grip aperture, time to peak velocity, percentage time to maximum grip aperture
20
21 (expressed as a percentage of total movement time) and percentage time to peak
22
23 velocity (expressed as a percentage of total movement). Maximum grip aperture was
24
25 defined as the maximum 3-dimensional separation of the markers attached to the
26
27 index finger and the thumb. Movement time was defined as end time (defined as the
28
29 time at which the velocity of the marker attached to the thumb fell below 50 mm/s)
30
31 minus start time (defined as the time at which the velocity of the marker attached to
32
33 the thumb exceeded 50 mm/s for at least 100ms). Peak velocity was defined as the
34
35 maximum velocity of the marker attached to the thumb. Time to peak velocity was the
36
37 time at which peak velocity occurred minus the start time. Percentage time to
38
39 maximum grip aperture was time to maximum grip aperture expressed as a percentage
40
41 of total movement time. Percentage time to peak velocity was the time to peak
42
43 velocity expressed as a percentage of total movement time. For each of these seven
44
45 variables an individual ANOVA was carried out for D.F. and each of the control
46
47 subjects, with two factors (1) Obstacle position (left / right) (2) Obstacle distance
48
49 (3cm / 6cm / 9cm) (target only trials were excluded from the analysis).
50
51
52
53
54
55
56
57
58
59
60

2.2.2. Trajectory

1
2
3 Figure 3 shows the average trajectory of the index finger and thumb for each
4 condition for D.F. and controls, normalized for the start position. These graphs clearly
5 show that both D.F. and the controls shift their trajectory to the right in the presence
6 of a left obstacle, and shift their trajectory to the left in the presence of a right
7 obstacle, the largest shift occurring when the obstacle is close to the target. A
8 modified t-test was conducted comparing the trajectory for D.F. and controls every 1
9 cm of the movement; this revealed no significant differences between D.F. and the
10 controls.
11
12
13
14
15
16
17
18
19
20
21

22 Figure 3 about here

23 2.2.3. Kinematics

24 Table 1 shows the kinematic data for D.F. and the controls in each condition. An
25 individual ANOVA was used to assess the effect of obstacle position (left / right) and
26 obstacle distance (3cm / 6cm / 9cm) for D.F. and each of the controls. The results for
27 the control subjects were considered to be consistent if significant effects were
28 observed in four or more of the six controls. For D.F. a significant effect of obstacle
29 *position* was observed for peak velocity ($p < 0.05$), in that D.F. achieved a higher
30 peak velocity when the obstacle was present on the left. No other effects of obstacle
31 position were observed in D.F. and no consistent effects of obstacle position were
32 observed in the control subjects. A significant effect of obstacle *distance* on maximum
33 grip aperture was observed for D.F. ($p < 0.01$), with an increase in maximum grip
34 aperture as distance between the target and obstacle increased. Similar effects and
35 patterns were consistently observed in the control subjects ($p < 0.01$). A significant
36 effect of obstacle distance on movement time was present for D.F. ($p < 0.05$), in that
37 D.F. shows an increase in movement time when there is an increase in distance
38 between the target and obstacle. A significant effect of obstacle distance on movement
39
40
41
42
43
44
45
46
47
48
49
50
51
52
53
54
55
56
57
58
59
60

1
2
3 time was also consistently observed in the control subjects ($p < 0.05$), but the pattern
4
5 of results goes in the opposite direction, with a decrease in movement time as distance
6
7 between obstacle and target increases. A significant effect of obstacle distance on
8
9 percentage time to maximum grip aperture was also observed for D.F. ($p < 0.05$), in
10
11 that D.F. showed an earlier time to maximum grip aperture as distance between the
12
13 target and obstacle increased, while no such pattern was observed consistently for
14
15 control subjects. Finally a significant effect of obstacle distance on percentage time to
16
17 peak velocity was observed for D.F. ($p < 0.001$), reflecting an earlier time to peak
18
19 velocity for the far obstacle location compared to the other conditions. Such an effect
20
21 was also consistently observed in control subjects ($p < 0.05$), but this was due to the
22
23 peak velocity being reached at later times as the distance between target and obstacle
24
25 increased. No other significant effects of obstacle distance were observed for DF or
26
27 consistently for control subjects.
28
29
30
31
32

33
34 Table 1 about here
35
36
37

38 2.3. Discussion 39

40
41 The aim of Experiment 1 was to assess patient D.F.'s performance (in
42
43 comparison with controls) when asked to reach out and grasp a target object in the
44
45 presence of potential obstacles placed at different locations. The results demonstrate
46
47 that the average trajectory taken by the hand was similar in both D.F. and controls for
48
49 each obstacle condition. In other words, D.F. shifts her overall trajectory to the left in
50
51 the presence of a rightward obstacle and to the right in the presence of a leftward
52
53 obstacle, in a manner comparable to healthy subjects. We suggest that this intact
54
55 obstacle avoidance behaviour is achieved by virtue of her functioning dorsal stream of
56
57 visual processing [13].
58
59
60

1
2
3 The kinematic results confirm the observations by Mon-Williams et al [27]
4 that the presence of obstacles during a reach-to-grasp task leads to an increase in
5 movement time and a decrease in maximum grip aperture in healthy subjects. They
6 further confirm that these effects are highly dependent on the distance of the obstacle
7 from the target [26], with a decrease in maximum grip aperture and an increase in
8 movement time being seen as the target-obstacle separation decreases. In addition we
9 have found that time to peak velocity (expressed as a percentage of movement time)
10 occurs later as distance between the target and obstacle increases in healthy
11 individuals. All of this suggests that the extent to which subjects adjust the transport
12 and grasp components of the reach in the presence of a potential obstacle is inversely
13 related to the target-obstacle separation, and thereby directly related to the risk of
14 collision with the obstacle. D.F.'s kinematic results similarly showed a decrease in
15 maximum grip aperture as distance between the target and obstacle became smaller,
16 strengthening the finding that she exhibits intact obstacle avoidance behaviour. One
17 surprising difference between D.F. and the controls, however, is that as the target-
18 obstacle separation increased she showed a *slower* movement time. In other words,
19 the closer the obstacle was to the target, the faster were D.F.'s reaches. It is possible
20 that this is due to the fact that the presence of the non-target obstacles in the
21 workspace enriched D.F.'s spatial representation of the scene, giving her more
22 confidence to move faster. In addition, DF also showed an atypical pattern of results
23 when time to maximum grip aperture and time to peak velocity were expressed as a
24 percentage of movement time. It should be noted, however, that in this study no
25 constraints were placed on the subjects regarding speed of movement, and D.F.'s
26 movement time was approximately twice as long as control subjects in all conditions.
27 This makes comparisons of her kinematic data difficult.
28
29
30
31
32
33
34
35
36
37
38
39
40
41
42
43
44
45
46
47
48
49
50
51
52
53
54
55
56
57
58
59
60

1
2
3
4
5
6
7
8
9
10
11
12
13
14
15
16
17
18
19
20
21
22
23
24
25
26
27
28
29
30
31
32
33
34
35
36
37
38
39
40
41
42
43
44
45
46
47
48
49
50
51
52
53
54
55
56
57
58
59
60

There has been much debate in the literature between the respective merits of ‘distractor’ accounts and ‘obstacle avoidance’ accounts of the effects of non-target objects on motor behaviour [2, 31]. It has been argued that effects such as those observed in the present experiment cannot be explained by obstacle avoidance alone and may be due to the fact that the non-target objects serve as distractors and cause competition for attention [2]. For example, studies have shown that non-target objects in the form of an LED (which would cause no risk of collision) can cause reaching movements to veer away. Although the authors interpret their findings as a kind of attentional repulsion [11, 31], Tresilian [33] argues that this additional postulate is unnecessary for explaining the data. Since participants were instructed to attend to the LED, their behaviour could have been an avoidance response to ensure unrestricted viewing to comply with task instructions. Such an explanation is supported by the observation that participants only veered away from the LED when it was possible for their reaching limb to obscure a clear view of it. If the non-target objects used in the present experiment were treated as distractors rather than obstacles, it is difficult to explain why participants not only moved their hand trajectories consistently away from them, differentially according to the distance of the non-target object from the target, but also opened their grip less widely for the closest non-target objects. Given this pattern of findings, it seems more appropriate to discuss the results of the present experiment within the framework of obstacle avoidance (i.e. that participants move away from the non-target objects in the work space and adjust the kinematics of their movements in order to minimize risk of collision). Of course, this *functional* interpretation does not exclude the possibility that the actual neural *mechanism* whereby the trajectories change could involve some kind of inhibitory process between the neuronal correlates of the target and non-target locations, thereby causing

1
2
3 a kind of 'repulsion' effect. But then of course a different interpretation would have to
4
5 be sought for the changes observed in grip size.
6

7
8 In summary, the results of Experiment 1 show that the presence of obstacles in
9
10 the workspace causes both D.F. and healthy subjects to adjust their reaching
11
12 trajectory, and decrease their maximum grip aperture, ostensibly in order to avoid the
13
14 possibility of collision. The effects observed are dependent on the distance of the non-
15
16 target object from the target, with those closest to the target having the greatest effect.
17
18 The data thus confirm our prediction that D.F. should have intact obstacle avoidance
19
20 behaviour, and they thereby provide convergent support for the idea that such
21
22 behaviour is mediated by the dorsal stream of visual processing.
23
24
25

26
27 One weakness of the present experiment, however, is that we do not have a
28
29 control task that would enable us to demonstrate a dissociation between D.F.'s intact
30
31 visuomotor behaviour and impaired perceptual processing. Such a task (i.e. one that is
32
33 formally similar to the visuomotor task but which demands an element of perceptual
34
35 processing) would enable us to make a stronger claim regarding D.F.'s intact obstacle
36
37 avoidance behaviour. In addition, the present study had no constraints placed on the
38
39 subjects regarding speed of movement. Finally, although D.F. is the most extensively
40
41 studied patient with visual form agnosia, a second patient would enable us to make
42
43 stronger claims for preserved obstacle avoidance behaviour in patients of this kind.
44
45
46

47
48 In Experiment 2, we sought to examine whether we could extend the results of
49
50 Experiment 1 to demonstrate a partial double dissociation between visual form
51
52 agnosia and optic ataxia, using tasks similar to those of Schindler et al [28]. In that
53
54 study, two patients with bilateral optic ataxia showed a complete failure to heed the
55
56 changing obstacle locations during a reaching task, while both showed a full
57
58 appreciation of the same two objects when making a bisection judgement of the space
59
60

1
2
3 between them. In the present experiment we were able to test both D.F. and also a
4
5 second patient with visual form agnosia, S.B. The experimental paradigm extends the
6
7 previous experiment, not only by including a perceptual control task, but also in that
8
9 subjects are given instructions regarding speed of movement.
10
11
12

13 14 15 **3. Experiment 2**

16 17 *3.1. Method*

18 19 20 *3.1.1. Participants*

21
22 Two patients with visual form agnosia (D.F. and S.B.) and sixteen age-
23
24 matched controls took part in the study. Eight of the controls were females age-
25
26 matched to D.F. (average 46.3 years, SD 7.4 years), while the others were males age-
27
28 matched to S.B. (average 34.4 years, SD 3.5 years). All participants were right-
29
30 handed by self-report, had normal or corrected to normal vision and no history of
31
32 neurological disorders.
33
34

35
36 D.F. was 48 years old at the time of testing, while S.B. was 34 years old.
37
38 Patient S.B. had developed visual form agnosia following meningoencephalitis at 3
39
40 years old. As shown in the extensive studies of Lê and her colleagues [16], his deficits
41
42 include achromatopsia, prosopagnosia, alexia and object agnosia. Like D.F., S.B.
43
44 typically focuses on parts of objects rather than the objects themselves, and can
45
46 process local aspects of shapes while failing to link and integrate them as a global
47
48 whole. S.B. also shares D.F.'s ability to generate and manipulate visual images. S.B.
49
50 performs better than D.F. in matching meaningful and meaningless objects, as well as
51
52 in copying drawings (relying on feature by feature analysis of the objects), and in
53
54 being able to navigate his way confidently in both familiar and non-familiar
55
56 environments. He also has a striking ability to use motion information to help him
57
58
59
60

1
2
3 identify objects. MRI scans show lesions of the occipitoparietal and occipitotemporal
4
5 regions in the right hemisphere and the occipitotemporal junction of the left
6
7 hemisphere. The right hemisphere lesion is reported to include complete or partial
8
9 damage to areas V2, V3, V4, V5 and LO, and there is limited damage to the right
10
11 supramarginal gyrus. There is a spared region in the right occipital pole including the
12
13 calcarine fissure (V1), in its rostral and superior aspects. In the left hemisphere, the
14
15 lesion involves mainly the ventrolateral visual cortex, including the fusiform gyrus
16
17 and area LO [16] (see Figure 4).
18
19
20
21

22 The study was carried out according to the principles of the Declaration of
23
24 Helsinki, on the basis of informed consent, and was approved by the local research
25
26 ethics committee.
27
28
29
30
31

32 Figure 4 about here
33

34 3.1.2. Apparatus

35
36 The experimental set-up is depicted in Figure 5. Participants faced a 60 cm²
37
38 white stimulus board laid horizontally on a table. This board consisted of a start
39
40 button located 10 cm from the edge of the board and a 5-cm grey target zone, which
41
42 spanned the far edge of the board. Two grey cylinders (24.5 cm tall and 3.5 cm in
43
44 diameter) could be fixed to the board one on either side of the midline at a distance of
45
46 25 cm from the start position and 20 cm in front of the grey target zone. Each of the
47
48 cylinders could occupy one of two locations, with its inside edge either 8 cm or 12 cm
49
50 from the midline. The factorial combination of these locations created four possible
51
52 stimulus configurations. A strip of white card was placed between the two cylinders in
53
54 every trial to prevent participants using the visible holes to guide them.
55
56
57
58
59
60

Figure 5 about here

1
2
3 Liquid-crystal shutter glasses (*Plato*, Translucent Technologies Inc., Toronto)
4
5 were worn by participants and were programmed to open for 2 s at the onset of each
6
7 trial. Hand movements were recorded using *Optotrak* (Northern Digital Inc.,
8
9 Waterloo, Ontario), sampling the position of a marker attached to the nail of the right
10
11 index finger, at a frequency of 100 Hz. In both the reaching and bisection tasks, the
12
13 entire movement was recorded (i.e. from the initial start position to the movement
14
15 endpoint). The start position and end position were defined by the frame at which
16
17 hand velocity rose or fell below a threshold of 50 mm/s respectively. The data were
18
19 processed using custom written Labview programs (National Instruments Inc).
20
21
22
23
24
25

26 27 3.1.3. Procedure

28
29 Participants were required to perform both a reaching task and a bisection task,
30
31 in separate blocks. They were instructed to place their right index finger on the start
32
33 button when they were ready to begin each trial, and to initiate their response when
34
35 they heard a tone signal, which was presented immediately on the closure of the
36
37 shutter glasses. In the reaching task participants were instructed to reach out and touch
38
39 a target zone located beyond the two cylinders, and were told that the emphasis was
40
41 on speed of movement. They were instructed that whenever a cylinder was present
42
43 there would be one on the left and one on the right and they should pass their hand
44
45 between the two cylinders rather than around the outside edge of the board. Each
46
47 participant made 60 reaches in a fixed pseudo-random order, with 12 trials for each of
48
49 the four cylinder configurations and 12 in which no cylinders were present (these
50
51 trials were included to check for any systematic bias when the reaching response was
52
53 not constrained by any potential obstacles; they were not included in the main
54
55 analysis). In the bisection task, participants were informed that the position of the
56
57
58
59
60

1
2
3 cylinders would vary from trial to trial, and that there would always be one on the left
4
5 and one on the right. They were instructed to point to the midpoint between the two
6
7 cylinders, and told that the emphasis in this task was on accuracy of judgement. Each
8
9 participant made 48 bisection responses, including 12 trials for each of the stimulus
10
11 configurations, presented in a fixed pseudo-random order.
12
13
14
15
16

17 3.2. Results

18 3.2.1 Analysis

19
20
21 The dependent measure taken for each trial in the bisection task was the final
22
23 lateral position (P) of the marker on the index finger with respect to the midline of the
24
25 stimulus board. Similarly, the dependent measure for the reaching task was the lateral
26
27 position of the marker as it crossed the virtual line joining the two cylinder locations
28
29 (here the exact value of P was estimated by linear interpolation).
30
31
32

33
34 The main analyses were of the weightings given to the two cylinders during
35
36 each task by each subject (dP_L and dP_R : [18, 28]). These indices measure the mean
37
38 change in P that is associated with a shift of either cylinder between its two locations,
39
40 while the other remains in the same location (i.e. how much the response shifts in
41
42 relation to a 40 mm shift of one or the other cylinder). If we denote the four different
43
44 cylinder locations as a = outer left, b = inner left, c = inner right, and d = outer right,
45
46 we can refer to the four possible stimulus configurations as: ac , ad , bc , and bd . The
47
48 weighting indices are then given by the following equations:
49
50
51

$$52 \quad dP_L = \text{mean } P(bc, bd) - \text{mean } P(ac, ad) \quad \text{[reflecting changes caused by } a \leftrightarrow b \text{ shifts]}$$

$$53 \quad dP_R = \text{mean } P(bd, ad) - \text{mean } P(bc, ac) \quad \text{[reflecting changes caused by } c \leftrightarrow d \text{ shifts].}$$

54
55
56
57
58
59
60

1
2
3 Since there were no significant differences between the two control groups,
4 they were combined in the analyses in order to improve statistical power. The
5 modified t-test recommended by Crawford and Garthwaite [4] was used to make a
6 statistical comparison between each patient and the combined control group on each
7 of the two indices in each test condition. An independent-samples t-test was also used
8 to compare the group of patients ($n = 2$) to controls ($n = 16$). In a second set of
9 analyses the variability of reaches was assessed by calculating the variance of P. All
10 of the t-tests reported are one-tailed, since they are directional in nature.
11
12
13
14
15
16
17
18
19
20
21

22 Finally the kinematics of the movements were analysed, including reaction
23 time, movement time, peak velocity and time to peak velocity. Reaction time was
24 defined as the time elapsing after the tone signal at which the velocity of the marker
25 attached to index finger rose above 50 mm/s (the start time). Movement time was
26 defined as end time (defined as the time at which the velocity of the marker attached
27 to the index finger fell below 50 mm/s) minus the start time. Peak velocity was
28 defined as the maximum velocity of the marker attached to index finger. Time to peak
29 velocity was the time at which peak velocity occurred, minus the start time. The
30 kinematic data of 11 of the 16 controls were included in the analysis. For the other 5
31 control subjects the kinematic data had to be excluded due to technical problems with
32 the trigger sent from the shutter glasses to the *Optotrak* at the time of testing, which
33 caused the timing of the start of the recording to be unreliable. There is no reason to
34 think that the analysed data are unrepresentative of the whole group.
35
36
37
38
39
40
41
42
43
44
45
46
47
48
49
50
51
52
53
54

55 3.2.2. Reaching task

56
57 Figure 6 shows the dP_L and dP_R values for each subject in the experiment, that
58 is, the mean changes in reach trajectory (measured as P) that were associated with a
59
60

1
2
3 40 mm shift of either the left or right cylinder. It is clear that while a great deal of
4
5
6
7
8
9
10
11
12
13
14
15
16
17
18
19
20
21
22
23
24
25
26
27
28
29
30
31
32
33
34
35
36
37
38
39
40
41
42
43
44
45
46
47
48
49
50
51
52
53
54
55
56
57
58
59
60

variability in performance exists among the control subjects, both D.F. and S.B. perform within the normal range. The two patients took account of both the left and the right cylinder when making their reaches. Modified t-test comparisons revealed no significant differences between D.F. and the controls on either dP_L ($t = 1.39$, $p = 0.092$) or dP_R ($t = 0.59$, $p = 0.282$). Likewise, there were no significant differences between S.B. and the controls on either dP_L ($t = 0.58$, $p = 0.285$) or dP_R ($t = 1.05$, $p = 0.155$). In addition, an independent-samples t-test carried out on the full data set also failed to reveal any significant difference between the patients ($n = 2$) and the controls ($n = 16$) on either dP_L ($t = 1.38$, $p = 0.186$) or dP_R ($t = 1.16$, $p = 0.263$).

Figure 6 about here

The variance of both patient's P values was higher (D.F. = 165.8) and (S.B. = 544.0) than the controls (mean = 131.7). Modified t-tests showed that this difference was significant for S.B. ($t = 3.35$, $p = 0.004$), but not for D.F. ($t = 0.28$, $p = 0.393$).

Table 2 shows kinematic reaching-task data for D.F. and S.B. compared with those of controls. A modified t-test revealed that D.F. was significantly slower than controls in movement time ($p = 0.037$), and that S.B. differed from controls in the percentage time to peak velocity ($p = 0.02$). All other comparisons were non-significant.

Table 2 about here

3.2.3. Bisection task

Figure 7 shows the mean change in bisection response (P) that was associated with a 40 mm shift of either the left or right cylinder in the bisection task. It can be seen that D.F. lies outside the control range on both dP_L and dP_R , and that S.B. lies

1
2
3 outside the control range for dP_R , and only just within the lower range of control
4
5 values for dP_L . Modified t-tests revealed a significant difference between D.F. and
6
7 controls on both dP_L ($t = 2.51$, $p = 0.012$) and dP_R ($t = 2.29$, $p = 0.019$), and a
8
9 significant difference between S.B. and controls on dP_R ($t = 1.78$, $p = 0.048$). The
10
11 difference between S.B. and controls on dP_L failed to reach significance ($t = 1.25$, $p =$
12
13 0.116). Overall independent t-tests revealed significantly lower values in the patients
14
15 ($n = 2$) than in the controls ($n = 16$) on both dP_L ($t = 2.59$, $p = 0.02$) and dP_R ($t = 2.87$,
16
17 $p = 0.011$).

21
22 Figure 7 about here

23
24 The variance of the both patients' bisection points (P-values) was higher than
25
26 controls (D.F. = 133.53; S.B. = 63.67; control mean = 61.39). A modified t-test shows
27
28 that this was significant for D.F. ($t = 3.55$, $p = 0.001$), though not for S.B. ($t = 0.11$, p
29
30 $= 0.456$).

31
32
33 Table 3 shows the kinematic data for the patients and controls on the bisection
34
35 task. Modified t-tests revealed significantly lengthened movement times in both D.F.
36
37 ($p = 0.027$) and S.B. ($p = 0.033$). Both D.F. ($p = 0.04$) and S.B. ($p = 0.004$) also
38
39 differed from the controls in time to peak velocity, but this was due to their longer
40
41 movement durations, and the differences disappeared when time to peak velocity was
42
43 taken as a percentage of movement time. All other comparisons were non-significant.
44
45
46
47

48 Table 3 about here

51 52 53 3.3. Discussion

54
55 The aim of Experiment 2 was to examine obstacle avoidance behaviour in two
56
57 patients with bilateral ventral stream damage resulting in visual form agnosia, when
58
59 they were asked to reach between two cylinders varying in location from trial to trial.
60

1
2
3 The results show that our patients shifted their reaching trajectories in response to
4 shifts in obstacle position to an extent that fell within the normal range. Nevertheless,
5 the patients both failed to shift their bisections of the space between the same two
6 objects from trial to trial to the same extent as control subjects. As shown in Figures 8
7 and 9, these results provide a partial double dissociation when taken in combination
8 with those from the two optic ataxic patients tested by Schindler et al [28]. We believe
9 that this contrast provides strong evidence to support the role of the dorsal stream in
10 automatic obstacle avoidance. It should be noted however that there are differences in
11 the way the two groups of patients were tested – the optic ataxia patients were
12 required to maintain central fixation during the tasks whereas the visual form agnostic
13 patients were allowed free vision. This difference in testing conditions was due to the
14 fact that S.B. suffers from hemianopia in his left visual field, and we wanted to ensure
15 that he could see both of the obstacles.
16
17
18
19
20
21
22
23
24
25
26
27
28
29
30
31
32

33
34 Figures 8 and 9 about here

35
36 In the bisection task there was no significant difference between S.B. and
37 controls in the weightings attached to the left pole. This may perhaps be explained by
38 the fact that S.B. has acquired, as a result of his left hemianopia, a compensatory
39 strategy of habitually paying more attention to the left than the right side of space. He
40 could have done this easily in the present task through overt scanning, since there was
41 no requirement to fixate centrally while initially viewing the array. Indirect evidence
42 for this possibility is that S.B. tended to take long reaction times prior to lifting his
43 finger from the start switch (at which point the LC glasses closed). Also, it is notable
44 that despite his left visual hemifield being ‘blind’, S.B.’s responses are more heavily
45 influenced by the left cylinder than the right in both the reaching and bisection tasks.
46
47
48
49
50
51
52
53
54
55
56
57
58
59
60 [In contrast, in a separate reaching experiment in which S.B. was required to fixate on

1
2
3 a central target during the viewing period, his responses showed little influence of
4
5 shifts in the left cylinder, his dP_L value dropping from the present 12.86 mm to a non-
6
7 significant 3.83 mm.]
8
9

10 The major prediction of this study was that their functionally intact dorsal
11
12 streams should allow both D.F. and S.B. to perform normally in the reaching task,
13
14 where no perceptual judgements were required. The prediction as to how they would
15
16 perform in the bisection task, however, was less strong, since neither has a totally
17
18 destroyed ventral stream. James et al [13] demonstrated that the ventral stream lesions
19
20 in D.F. are largely restricted to area LO, though the damage is larger in the right
21
22 hemisphere than the left. The primary visual cortex as well as lingual and fusiform
23
24 gyrus are largely spared. Studies by Steeves and colleagues have shown that there is
25
26 sparing of D.F.'s fusiform face area [30] as well as of her parahippocampal place area
27
28 [29]. Such spared ventral stream areas could be implicated in spatial perception in
29
30 healthy individuals, and this could explain some of D.F.'s preserved abilities in the
31
32 bisection task. A close look at S.B.'s lesion reveals a similar sparing of ventral stream
33
34 areas, particularly in the left hemisphere, which may account for some of his
35
36 preserved abilities in the bisection task. In sum, it is clear that neither patient has a
37
38 completely destroyed ventral stream, and therefore it would be unlikely that either
39
40 patient would be totally unable to perform the bisection task. In practice, both of them
41
42 did perform at above-chance levels.
43
44
45
46
47
48
49

50 While the variability of the patients' responses was higher than that of controls
51
52 in both tasks, this cannot explain the absence of a statistically significant deficit in the
53
54 reaching task, for several reasons. Firstly, the calculation of the weightings attached to
55
56 the change in position of the left and the right cylinder was based only on mean reach
57
58 trajectories, and as such would not have been affected by the variability of responses.
59
60

1
2
3 Secondly, while both patients tended to have higher variability of responses than
4 controls in both tasks, the difference was small and non-significant for D.F. in the
5 reaching task (and for S.B. in the bisection task). Finally, if variability of responses
6 could explain the data it is unlikely that a dissociation between the two tasks would
7 have emerged, since it was present in both tasks.
8
9

10
11
12 The results of the kinematic analyses are consistent with our conclusions, in
13 that overall the patients showed greater deficits on the bisection task than the reaching
14 task. Both moved significantly more slowly than controls on the bisection task,
15 whereas D.F. only did so during the reaching task. Of course the slower movement
16 times in the bisection task cannot themselves explain the deficits seen in that task: if
17 anything one would expect a speed-accuracy trade-off. In general the control subjects
18 showed greater dP_L and dP_R values on the bisection than the reaching task, which is in
19 agreement with previous work [18, 28]. In part this may have been due to the
20 differential instructions given to participants, which were also reflected in the longer
21 reaction times and movement times, and lower peak velocities, on the bisection task
22 than the reaching. Presumably the kinematics of the patients' behaviour too reflected
23 these different task demands.
24
25
26
27
28
29
30
31
32
33
34
35
36
37
38
39
40
41
42

43 It is important to note that while D.F. and S.B. both show visual form agnosia,
44 that there are distinct differences between them in their pathology and associated
45 deficits. For example, D.F. detects high spatial frequencies well, whereas S.B.
46 performs better at low spatial frequencies; and D.F. has relatively preserved colour
47 vision, whereas S.B. is achromatopsic [16]. S.B.'s right ventral stream damage is
48 more extensive than D.F.'s, and his right parietal lesion is more extensive than D.F.'s
49 left parietal lesion. On the other hand D.F. has associated sulcal widening that is less
50 apparent in S.B., and she sustained her brain damage in adulthood rather than
51
52
53
54
55
56
57
58
59
60

1
2
3 childhood. Finally, S.B.'s extensive right hemisphere (including white matter) damage
4
5 has resulted in a hemianopia in his left visual field, whereas D.F. has a smaller lower
6
7 visual-field scotoma. The remarkable thing is that despite all of these differences, the
8
9 two patients behaved in a comparable fashion in our two tasks.
10
11

12 13 14 15 **4. Conclusions**

16
17 In Experiment 1, D.F. shifted her trajectory and adjusted her grip aperture in
18
19 the same manner as controls when asked to reach and grasp a target object in the
20
21 presence of non-target objects. In Experiment 2, both D.F. and S.B. shifted their
22
23 trajectories with respect to shifts in cylinder location when asked to reach between
24
25 two non-target objects in the same way as the controls, while showing a reduced
26
27 influence of the same two objects when required to make an explicit bisection
28
29 judgement between them. We interpret these results in terms of automatic obstacle
30
31 avoidance, and conclude that this implicit skill, whereby movement programming is
32
33 modified as a function of non-target objects, is preserved in patients with ventral
34
35 stream damage.
36
37
38
39

40
41 In line with our previous findings with neglect patients [18] and optic ataxic
42
43 patients [28], we believe that the present data provide further convergent support for
44
45 the view that automatic obstacle avoidance is a function of the dorsal stream of visual
46
47 processing. When this system is damaged, the automatic motor adjustments that we
48
49 have been measuring are absent; whereas when either the ventral stream or the
50
51 temporo-parietal systems associated with spatial neglect are damaged, these
52
53 adjustments remain intact. Our results extend the functional description of the ventral
54
55 and dorsal streams that has been developing over recent years [8, 22]. Not only is the
56
57 dorsal stream intimately involved in the transformation of target properties such as
58
59
60

1
2
3 size and location into motor coordinates for programming and controlling reaching
4
5 and grasping movements, it also automatically takes into account the location of *non*-
6
7 target stimuli while carrying out these computations.
8
9
10
11
12
13
14
15
16
17
18
19
20
21
22
23
24
25
26
27
28
29
30
31
32
33
34
35
36
37
38
39
40
41
42
43
44
45
46
47
48
49
50
51
52
53
54
55
56
57
58
59
60

For Peer Review

Acknowledgements:

This study was supported by research grants from the Wellcome Trust (grant 052443) and the Leverhulme Trust (grants F/268/T and F/00128/C). We are grateful to both D.F. and S.B. for their time, patience, and good-humoured cooperation.

For Peer Review

References

1. D.F. Benson, J.P. Greenberg, Visual form agnosia: a specific deficit in visual discrimination, *Archives of Neurology* 20 (1969) 82-89.
2. U. Castiello, Mechanisms of selection for the control of hand action, *Trends in Cognitive Sciences* 3 (1999) 264-271.
3. S. Chieffi, M. Gentilucci, A. Allport, E. Sasso, G. Rizzolatti, Study of selective reaching and grasping in a patient with unilateral parietal lesion, *Brain* 116 (1993) 1119-1137.
4. J.R. Crawford, P.H. Garthwaite, Investigation of the single case in neuropsychology: confidence limits on the abnormality of test scores and test score differences, *Neuropsychologia* 40 (2002) 1196-1208.
5. J. Culham, Neuroimaging investigations of visually-guided grasping. In: *Attention and Performance XX: Functional Brain Imaging of Human Cognition*, Oxford University Press, Oxford, 2004, pp. 415-436.
6. J.C. Culham, N.G. Kanwisher, Neuroimaging of cognitive functions in human parietal cortex, *Current Opinion in Neurobiology* 11 (2001) 157-163.
7. P.M. Fitts, The information capacity of the human motor system in controlling the amplitude of movement, *Journal of Experimental Psychology* 47 (1954) 381-391.
8. M.A. Goodale, A.D. Milner, *Sight Unseen: An Exploration of Conscious and Unconscious Vision*, Oxford University Press, Oxford, 2004.
9. M.A. Goodale, A.D. Milner, L.S. Jakobson, D.P. Carey, A neurological dissociation between perceiving objects and grasping them, *Nature* 349 (1991) 154-156.
10. B. Heider, Visual form agnosia: neural mechanisms and anatomical foundations, *Neurocase* 6 (2000) 1-12.
11. L.A. Howard, S.P. Tipper, Hand deviations away from visual cues: indirect evidence for inhibition, *Experimental Brain Research* 113 (1997) 144-152.
12. S.R. Jackson, G.M. Jackson, J. Rosicky, Are non-relevant objects represented in working memory? The effects of non-target objects on reach and grasp kinematics, *Experimental Brain Research* 102 (1995) 519-530.
13. T.W. James, J. Culham, G.K. Humphrey, A.D. Milner, M.A. Goodale, Ventral occipital lesions impair object recognition but not object-directed grasping: a fMRI study, *Brain* 126 (2003) 2463-2475.

14. M. Jeannerod, *The Cognitive Neuroscience of Action*, Blackwell, Oxford, 1997.
15. N. Kanwisher, R.P. Woods, M. Iacoboni, J.C. Mazziotta, A locus in human extrastriate cortex for visual shape analysis, *Journal of Cognitive Neuroscience* 9 (1997) 133-142.
16. S. Lê, D. Cardebat, K. Boulanouar, M.-A. Hénaff, F. Michel, A.D. Milner, H.C. Dijkerman, M. Puel, J.-F. Démonet, Seeing, since childhood, without ventral stream: a behavioural study, *Brain* 125 (2002) 58-74.
17. R.D. McIntosh, H.C. Dijkerman, M. Mon-Williams, A.D. Milner, Visuomotor processing of spatial layout in visual form agnosia. Presentation to the Experimental Psychology Society, Cambridge, July 2000, 2000.
18. R.D. McIntosh, K.I. McClements, H.C. Dijkerman, D. Birchall, A.D. Milner, Preserved obstacle avoidance during reaching in patients with left visual neglect, *Neuropsychologia* 42 (2004a) 1107-1117.
19. R.D. McIntosh, K.I. McClements, I. Schindler, T.P. Cassidy, D. Birchall, A.D. Milner, Avoidance of obstacles in the absence of visual awareness, *Proceedings of the Royal Society of London B* 271 (2004b) 15-20.
20. R. Malach, J.B. Reppas, R.B. Benson, K.K. Kwong, H. Jiang, W.A. Kennedy, P.J. Ledden, T.J. Brady, B.R. Rosen, R.B.H. Tootell, Object-related activity revealed by functional magnetic resonance imaging in human occipital cortex, *Proceedings of the National Academy of Science, USA* 92 (1995) 8135-8138.
21. A.D. Milner, Vision without knowledge, *Philosophical Transactions of the Royal Society of London, B* 352 (1997) 1249-1256.
22. A.D. Milner, M.A. Goodale, *The Visual Brain in Action*, Oxford University Press, Oxford, 1995.
23. A.D. Milner, C.A. Heywood, A disorder of lightness discrimination in a case of visual form agnosia, *Cortex* 25 (1989) 489-494.
24. A.D. Milner, R.D. McIntosh, Reaching between obstacles in spatial neglect and visual extinction, *Progress in Brain Research* 144 (2004) 213-226.
25. A.D. Milner, D.I. Perrett, R.S. Johnston, P.J. Benson, T.R. Jordan, D.W. Heeley, D. Bettucci, F. Mortara, R. Mutani, E. Terazzi, D.L.W. Davidson, Perception and action in 'visual form agnosia', *Brain* 114 (1991) 405-428.
26. M. Mon-Williams, R.D. McIntosh, A test between two hypotheses and a possible third way for the control of prehension, *Experimental Brain Research* 134 (2000) 268-273.

- 1
2
3 27. M. Mon-Williams, J.R. Tresilian, V.L. Coppard, R.G. Carson, The effect of
4 obstacle position on reach-to-grasp movements, *Experimental Brain Research* 137
5 (2001) 497-501.
6
7
- 8 28. I. Schindler, N.J. Rice, R.D. McIntosh, Y. Rossetti, A. Vighetto, A.D. Milner,
9 Automatic avoidance of obstacles is a dorsal stream function: evidence from optic
10 ataxia, *Nature Neuroscience* 7 (2004) 779-784.
11
12
- 13 29. J.K.E. Steeves, G.K. Humphrey, J.C. Culham, R.S. Menon, A.D. Milner, M.A.
14 Goodale, Behavioral and neuroimaging evidence for a contribution of color and
15 texture information to scene classification in a patient with visual form agnosia,
16 *Journal of Cognitive Neuroscience* 16 (2004) 955-965.
17
18
- 19 30. J.K.E. Steeves, J.C. Culham, B.C. Duchaine, C. Cavina Pratesi, K.F. Valyear, I.
20 Schindler, G.K. Humphrey, A.D. Milner, M.A. Goodale, The fusiform face area is
21 not sufficient for face recognition: evidence from a patient with dense
22 prosopagnosia and no occipital face area, *Neuropsychologia*, published online 25
23 August (2005).
24
25
26
27
28
- 29 31. S.P. Tipper, L.A. Howard, S.R. Jackson, Selective reaching to grasp: evidence for
30 distractor interference effects, *Visual Cognition* 4 (1997) 1-38.
31
32
- 33 32. J.R. Tresilian, Attention in action or obstruction of movement? A kinematic
34 analysis of avoidance behaviour in prehension, *Experimental Brain Research* 120
35 (1998) 352-368.
36
37
- 38 33. J.R. Tresilian, Selective attention in reaching: when is an object not a distractor?
39 *Trends in Cognitive Sciences* 3 (1999) 407-408.
40
41
42
43
44
45
46
47
48
49
50
51
52
53
54
55
56
57
58
59
60

Figure legends

Figure 1

Ventral stream lesions in patient D.F. shown in comparison with the expected location of the lateral occipital complex in healthy subjects, taken from MRI scan data.

(A) D.F.'s brain has been rendered at the pial surface (outer grey matter boundary).

Lesions were traced on slices that indicated tissue damage, and rendered on the pial surface in pale blue. Lateral views of the left and right hemispheres are shown, as is a ventral view of the underside of the brain. The rightmost image shows a slice through the lesions ($z = \pm 8$).

(B) The expected location of LOC based on group data from seven neurologically intact participants is shown on one individual's pial surface and on a slice through the $z = \pm 8$ plane. The activation in the slice is outlined in orange in panel A for comparison with the lesions in D.F.'s brain. (Reproduced with permission from James et al. [13]).

Figure 2

The experimental arrangement used in Experiment 1. The start position is shown as a filled black circle, the target as a filled rectangle, and the six possible obstacle locations as empty rectangles.

Figure 3

Experiment 1: Graphs depicting the reach trajectories (normalized for start position) taken by D.F. (top 3 graphs) and controls (bottom 3 graphs) for each of the 3 obstacle locations. The solid line represents reach trajectories when the obstacle was present on the left and the broken line represents reach trajectories when the obstacle was on the right.

Figure 4

The lesion sites in patient S.B., as reconstructed from MRI scan data. (Reproduced with permission from Lé et al. [16]).

Figure 5

1
2
3 The experimental arrangement used in Experiment 2. The start button is shown as a
4 filled black circle, and the possible locations of the two cylindrical non-target objects
5 are shown as open circles. The target zone is shown in grey at the far edge of the
6 board. A strip of white card was placed between the two cylinders on every trial to
7 cover the unused holes.
8
9

10
11
12
13
14 Figure 6

15 The 'weightings' (dP_L and dP_R) given to each cylinder by D.F. and S.B. and the
16 controls in the reaching task. These values indicate the extent to which each subject
17 takes the left or right cylinder's location into account when performing the task.
18
19

20
21
22
23 Figure 7

24 The 'weightings' given to each cylinder by D.F. and S.B. and the controls in the
25 bisection task.
26
27

28
29
30 Figure 8

31 The weightings given to the two cylinders by our two visual form agnosic patients
32 (D.F. and S.B.) and by optic ataxic patients A.T. and I.G. [28] in the reaching task.
33
34

35
36
37 Figure 9

38 The weightings given to the two cylinders by our two visual form agnosic patients
39 (D.F. and S.B.) and by optic ataxic patients A.T. and I.G. [28] in the bisection task.
40
41
42
43
44
45
46
47
48
49
50
51
52
53
54
55
56
57
58
59
60

Table 1

		Far left	Middle left	Near left	Target only	Near right	Middle right	Far right
MGA	DF	68.17	67.29	65.32	67.44	64.1	68.83	70.29
	Controls	81.66	80.86	71.56	80.19	70.32	79.29	82.66
MT	DF	1058.54	951.58	949.46	1042.78	956.21	991.03	1027.03
	Controls	524.92	553.83	586.44	517.02	608.2	565.44	525.18
PV	DF	816.66	814.7	823.08	793.6	784.05	792.92	794.56
	Controls	1294.91	1251.43	1269.48	1274.23	1130.2	1211.11	1293.34
TMGA	DF	591.3	591.15	599.74	587.68	539.94	603.89	576.79
	Controls	303.61	317.86	319.89	303.25	319.84	332.9	315.41
TPV	DF	312.18	329.01	321.83	318.26	304.51	334.47	285.53
	Controls	202.81	206.64	198.99	197.76	196.1	222.59	201.3
%TMGA	DF	56.11	62.5	63.79	56.59	57.06	61.49	56.26
	Controls	59.17	57.72	55.6	59.47	52.62	58.66	60.22
%TPVEL	DF	29.62	34.84	34.11	30.54	32.15	34.06	27.95
	Controls	40.89	38.12	34.79	39.31	32.85	39.56	40.09

Experiment 1: Kinematic data for D.F. and healthy controls for each of the test conditions, including maximum grip aperture (MGA), movement time (MT), peak velocity (PV), time to maximum grip aperture (TMGA), time to peak velocity (TPV), % time to maximum grip aperture (%TMGA) and % time to peak velocity (%TPVEL).

Table 2

Subject	RT (ms)	MT (ms)	PV (mm/s)	TPV (ms)	%TPV
DF	448.75	932.46*	1203.43	351.46	37.56
SB	351.25	439.17	2926.58	220.74	50.26*
Mean C	206.85	603.45	1742.98	238.56	39.46

Experiment 2: Kinematic data for D.F., S.B. and 11 healthy control subjects in the reaching task.

Table 3

Subject	RT (ms)	MT (ms)	PV (mm/s)	TPV (ms)	%TPV
DF	431.46	948.44*	564.1	425.42*	44.85
SB	580.21	930.63*	682.86	538.57**	57.87
Mean C	349.2636	602.71	907.6009	267.7645	45.47

Experiment 2: Kinematic data for D.F., S.B. and 11 healthy control subjects in the bisection task.