

Durham Research Online

Deposited in DRO:

30 August 2018

Version of attached file:

Published Version

Peer-review status of attached file:

Peer-reviewed

Citation for published item:

Liu, Jun and Higgins, Claire A. and Whitehouse, Jenna C. and Harris, Susan J. and Crawford, Heather and Christiano, Angela M. and Lako, Majlinda and Hole, Nicholas and Jahoda, Colin A. B. (2018) 'Hair follicle dermal cells support expansion of murine and human embryonic and induced pluripotent stem cells and promote haematopoiesis in mouse cultures.', *Stem cells international.*, 2018 . p. 8631432.

Further information on publisher's website:

<https://doi.org/10.1155/2018/8631432>

Publisher's copyright statement:

Copyright © 2018 Jun Liu et al. This is an open access article distributed under the Creative Commons Attribution License, which permits unrestricted use, distribution, and reproduction in any medium, provided the original work is properly cited.

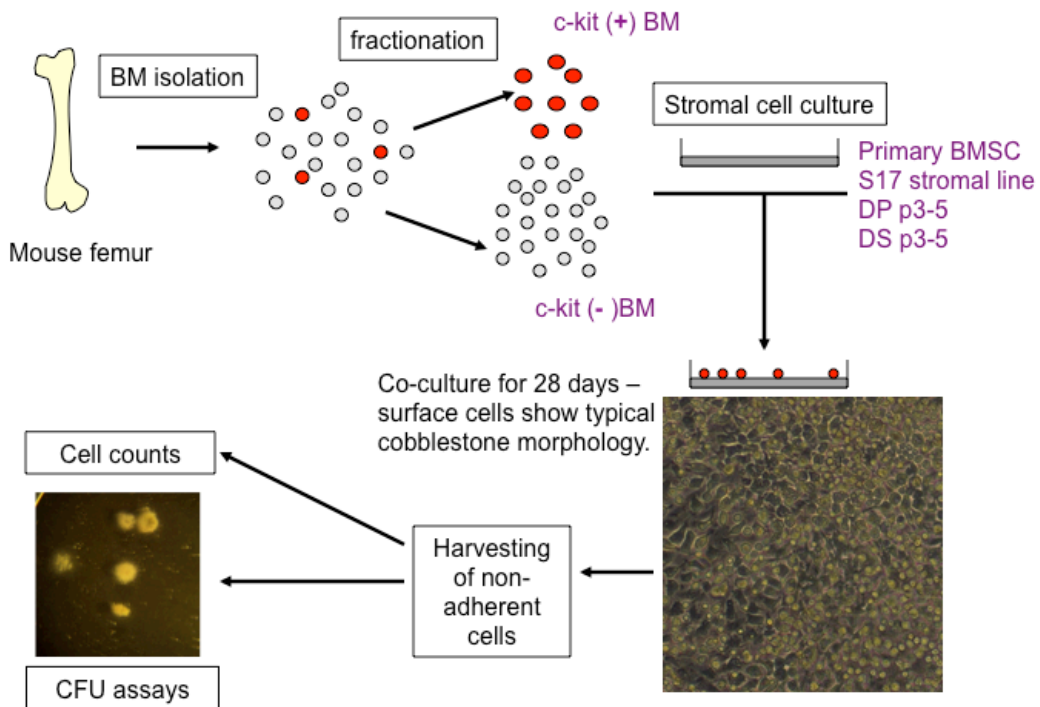
Use policy

The full-text may be used and/or reproduced, and given to third parties in any format or medium, without prior permission or charge, for personal research or study, educational, or not-for-profit purposes provided that:

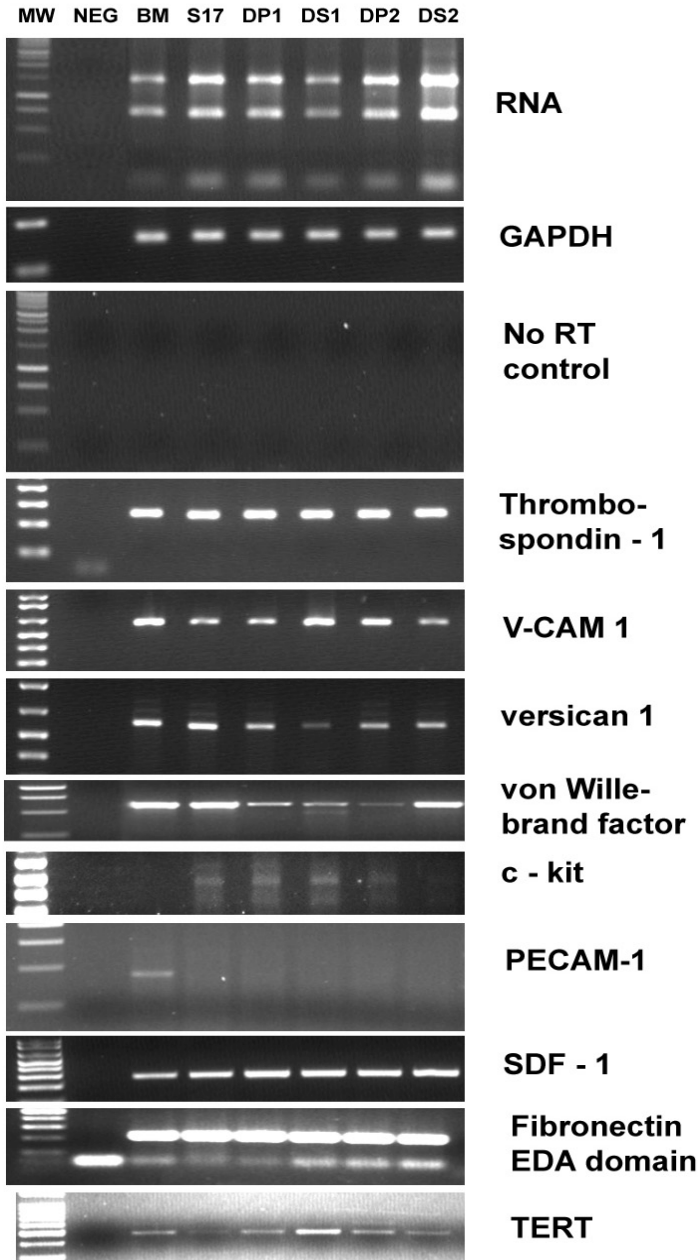
- a full bibliographic reference is made to the original source
- a [link](#) is made to the metadata record in DRO
- the full-text is not changed in any way

The full-text must not be sold in any format or medium without the formal permission of the copyright holders.

Please consult the [full DRO policy](#) for further details.



S1 – Schematic showing the strategy used to compare the support of hair follicle dermal cells and bone marrow stromal cells for blood cells.



S2 RT-PCR demonstrates that important markers of the haematopoietic environment including, Thrombospondin-1, V-CAM 1 and SDF-1 are expressed in bone marrow stromal cells (BM), S-17 an immortalized stromal cell culture line, as well as hair follicle dermal papilla (DP) and dermal sheath (DS) cells (two strains shown).