

Durham Research Online

Deposited in DRO:

27 November 2020

Version of attached file:

Accepted Version

Peer-review status of attached file:

Peer-reviewed

Citation for published item:

Mendis, Budhika G. and Barthel, Juri and Findlay, Scott D. and Allen, Leslie J. (2020) 'Inelastic scattering in electron backscatter diffraction and electron channeling contrast imaging.', *Microscopy and microanalysis*, 26 (6). pp. 1147-1157.

Further information on publisher's website:

<https://doi.org/10.1017/S1431927620024605>

Publisher's copyright statement:

This article has been published in a revised form in *Microscopy and Microanalysis*
<https://doi.org/10.1017/S1431927620024605>. This version is published under a Creative Commons CC-BY-NC-ND. No commercial re-distribution or re-use allowed. Derivative works cannot be distributed. © The Author(s), 2020.
Published by Cambridge University Press on behalf of the Microscopy Society of America.

Use policy

The full-text may be used and/or reproduced, and given to third parties in any format or medium, without prior permission or charge, for personal research or study, educational, or not-for-profit purposes provided that:

- a full bibliographic reference is made to the original source
- a [link](#) is made to the metadata record in DRO
- the full-text is not changed in any way

The full-text must not be sold in any format or medium without the formal permission of the copyright holders.

Please consult the [full DRO policy](#) for further details.

Inelastic scattering in electron backscatter diffraction (EBSD) and electron channeling contrast imaging (ECCI)

BG Mendis^{1,4}, J Barthel², SD Findlay³ and LJ Allen⁴

1. *Dept of Physics, Durham University, South Road, Durham, DH1 3LE, UK*
2. *Ernst Ruska Centre (ER-C), Forschungszentrum Jülich GmbH, 52425 Jülich, Germany*
3. *School of Physics and Astronomy, Monash University, Clayton, Victoria 3800, Australia*
4. *School of Physics, University of Melbourne, Parkville, Victoria 3010, Australia*

Abstract

Electron backscatter diffraction (EBSD) and electron channeling contrast imaging (ECCI) are used to extract crystallographic information from bulk samples, such as their crystal structure, orientation as well as presence of any dislocation and grain boundary defects. These techniques rely on the backscattered electron signal, which has a large distribution in electron energy. Here the influence of plasmon excitations on EBSD patterns and ECCI dislocation images is uncovered by multislice simulations including inelastic scattering. It is shown that the Kikuchi band contrast in an EBSD pattern for silicon is maximum at small energy loss (i.e. few plasmon scattering events following backscattering), consistent with previous energy filtered EBSD measurements. On the other hand, plasmon excitation has very little effect on the ECCI image of a dislocation. These results are explained by examining the role of the characteristic plasmon scattering angle on the intrinsic contrast mechanisms in EBSD and ECCI.

Keywords: EBSD, ECCI, multislice, plasmons, backscattered electrons.

Introduction

The channeling dependence of the electron backscatter yield in a scanning electron microscope (SEM) is exploited in techniques such as electron backscatter diffraction (EBSD) and electron channeling contrast imaging (ECCI). EBSD provides information on crystal phases, their orientation, grain boundaries and strain (Schwartz et al., 2009; Zaefferer, 2007), while ECCI is used for imaging crystal defects such as dislocations, stacking faults and sub-grain boundaries (Wilkinson & Hirsch, 1997; Zaefferer & Elhami, 2014). Simulations are often essential for interpreting subtle features in the data, such as ferroelectric domains (Burch et al. 2017), chirality (Winkelmann & Nolze, 2015) and strain (Britton et al., 2010) in EBSD, as well as the contrast due to elastic strain fields in ECCI (Picard et al., 2014; Kriaa et al., 2019). While there have been several attempts at modelling electron backscattering under channeling conditions (Dudarev et al., 1995; Spencer et al., 1972), current Bloch wave-based simulation methods (Picard et al., 2014; Winkelmann et al., 2007; Winkelmann, 2008, 2009; Callahan et al., 2013; Pascal et al., 2018) rely on the observation that electron backscattering is largely incoherent, so that the backscatter signal from any given atom is proportional to the local electron beam intensity. Furthermore, in EBSD the reciprocity principle (Winkelmann, 2008)

is invoked to simplify calculation of the backscattered wave propagation towards the detector, while in ECCI the column approximation (Hirsch et al., 1965) is assumed so that Bloch waves can be applied to a defect crystal in a tractable manner.

An important feature of Bloch wave calculations is that inelastic scattering is modelled phenomenologically via a complex crystal potential (Hirsch et al., 1965). The imaginary term of the potential results in an electron flux that is continuously depleted as the electron beam propagates through the crystal. Since the exact distribution of the diffuse scattered intensity within the specimen is unknown it is difficult to accurately calculate its contribution to the backscattered signal. On the other hand, the physical optics-based multislice method (Cowley & Moodie, 1957; Kirkland, 2010), using either the (quasi-elastic) frozen phonon model (Loane et al., 1991) or the quantum excitation of phonons model (Forbes et al., 2010; Forbes & Allen, 2016), can reproduce the diffuse scattered intensity distribution due to phonon scattering. This is essential for correctly modelling the intensity of Kikuchi bands and higher order Laue zone (HOLZ) rings (Kirkland, 2010). Chen and Van Dyck (1997) developed a more accurate multislice method that is applicable to the lower electron beam energies in an SEM. For reasons that will be discussed later (see Methods section) this produces better agreement with experimental EBSD patterns compared to the conventional, high energy multislice calculations (Liu et al., 2016).

Apart from phonon losses, the incident electron can also scatter inelastically through collective plasmon excitations as well as single electron ionisation and interband transition events. Of these, plasmons typically have the largest scattering cross-section (Egerton, 1996). Energy filtered EBSD patterns have shown that for the standard experimental geometry of a 70° tilted sample the Kikuchi band contrast first increases with energy loss, reaching maximum contrast at few tens or hundreds of eV, before slowly decreasing at higher energy losses (Deal et al., 2008; Vos & Winkelmann, 2019). The energy loss at peak contrast is well below that of single electron ionisation but greater than the recoil energy for backscattering (Winkelmann & Vos, 2013), which suggests that the contrast mechanism may also involve plasmon and/or interband transitions. Therefore, accurate simulation of EBSD patterns requires at least plasmon scattering to be included alongside phonons. To our knowledge there are no reports of energy filtered ECCI images, although the introduction of Timepix direct electron detectors with energy thresholding (Vespucchi et al., 2015) may make acquiring such images possible.

Recently Monte Carlo methods have been used to include plasmon excitations in multislice simulations (Mendis, 2019, 2020; Barthel et al., 2020). The underlying principle is that plasmon excitations are highly delocalised (Muller & Silcox, 1995) and are therefore not significantly affected by electron beam channeling. Computer generated random numbers are used to estimate the plasmon scattering depth and angle. The depth is sampled from a Poisson distribution with mean value equal to the plasmon mean free path, while the angle is sampled from a Lorentzian distribution with half-width-at-half-maximum equal to the plasmon characteristic scattering angle (Egerton, 1996). Following plasmon excitation at the estimated depth, the estimated scattering angle is used to modify the subsequent electron trajectory through the sample (the change in electron wavelength due to plasmon energy loss is often sufficiently small to be neglected). This process is repeated for many plasmon ‘configurations’ and the results incoherently summed to give a statistically averaged result. Plasmon multislice

simulations have been shown to reproduce experimental energy filtered diffraction patterns (Mendis, 2019), as well as the angular distribution of scattering in position averaged convergent beam electron diffraction (PACBED) patterns (Barthel et al., 2020). These calculations were however for high energy electron diffraction in transmission geometry.

In this paper we introduce plasmon excitations to the multislice method of Chen and Van Dyck (1997) with the purpose of uncovering their role in the contrast mechanisms in EBSD and ECCI. This is an improvement over current simulation methods (Picard et al., 2014; Winkelmann et al., 2007; Winkelmann, 2008, 2009; Callahan et al., 2013; Pascal et al., 2018) which assume no inelastic scattering (apart from phonons) before or after the backscattering event in ECCI and EBSD respectively. The energy of backscattered electrons can vary over all energies up to the primary energy of the incident electron beam. However, much of the channeling contrast signal is contained in those electrons with low energy loss (Deal et al., 2008; Vos & Winkelmann, 2019), while the higher energy loss electrons contribute a background signal with no useful information. While our simulations cannot reproduce the full energy spectrum of the backscattered electrons, it does offer insight into the underlying scattering mechanisms that govern channeling contrast. It could also be useful for quantitative comparison with energy filtered data or for estimating the optimum experimental conditions for a given measurement.

Methods

Multislice Method

The conventional multislice method, first proposed by Cowley and Moodie (1957), is based on an approximate form of the Schrödinger equation where the second derivative of the electron wavefunction Ψ with respect to depth z (i.e. the $\partial^2\Psi/\partial z^2$ term) is assumed to be small (Kirkland, 2010). This approximation is valid at high energies ($\gtrsim 100$ keV) of the incident electron beam, since then scattering is weak and the wavefunction changes only slowly as a function of depth within the specimen. For sufficiently small slice thickness the error is $O(\lambda^3)$, where λ is the incident electron wavelength (Chen & Van Dyck, 1997). For lower beam energies (e.g. SEM) the more accurate multislice method of Chen and Van Dyck (1997), based on the full Schrödinger equation, may be required. For example, at lower energies the electron refractive index will depend on higher order terms in the specimen potential (Lentzen, 2017); this limits the accuracy of the phase grating function as used in the conventional multislice model, where the phase shift due to scattering is taken to be proportional to the slice potential (Kirkland, 2010). Similarly, the higher scattering angles at lower energies may mean that the parabolic approximation assumed for the Ewald sphere propagator function is no longer valid (Ming & Chen, 2013). A further benefit of the Chen and Van Dyck method is that it is also accurate for large beam tilts (Chen et al., 1997). This is particularly important for the EBSD simulations in this work, where the beam tilt is as large as 30° (see Methods section). For these reasons we use the more accurate multislice method of Chen and Van Dyck (1997) for the simulations, the implementation of which is summarised below.

In multislice the specimen is divided into a series of thin slices of thickness ε in the z -direction. The full Schrödinger equation for the j^{th} -slice, which extends from $z = (j-1)\varepsilon$ to $z = j\varepsilon$, can be expressed as (Chen & Van Dyck, 1997):

$$\frac{\partial^2 \Psi^j(\mathbf{r})}{\partial z^2} + [2\pi \hat{k}_j(\mathbf{R})]^2 \Psi^j(\mathbf{r}) = 0 \quad \dots (1a)$$

$$\hat{k}_j(\mathbf{R}) = K_o \sqrt{1 + \frac{\nabla_{xy}^2}{(2\pi K_o)^2} + \frac{\sigma}{\pi K_o} U_j(\mathbf{R})} \quad \dots (1b)$$

$$U_j(\mathbf{R}) = \frac{1}{\varepsilon} \int_{(j-1)\varepsilon}^{j\varepsilon} U(\mathbf{r}) dz \quad \dots (1c)$$

where $\Psi^j(\mathbf{r})$ is the electron wavefunction for the j^{th} -slice at the position vector $\mathbf{r} = (\mathbf{R}, z)$, with \mathbf{R} being a two-dimensional position vector in the xy -plane of the specimen. K_o is the wavenumber of the incident electron, $\nabla_{xy}^2 = \frac{\partial^2}{\partial x^2} + \frac{\partial^2}{\partial y^2}$ is the Laplacian in the xy -plane and $\sigma = 2\pi em/(K_o h^2)$ is the interaction constant (e , m are the charge and mass of the electron and h is Planck's constant). $U_j(\mathbf{R})$ is the slice potential $U(\mathbf{r})$ projected along the z -direction. The $\hat{k}_j(\mathbf{R})$ operator is valid for scattering in the forward direction (Chen & Van Dyck, 1997). Note that Equation 1(a) includes the $\partial^2 \Psi^j / \partial z^2$ term which is required for higher accuracy.

By use of suitable boundary conditions (i.e. Ψ^j and $\partial \Psi^j / \partial z$ are continuous at the boundary between neighbouring slices) the forward scattered wave can be calculated using a so-called 'transfer matrix' method; see Chen & Van Dyck (1997) for details. For materials where backscattering is negligible (e.g. light atomic number elements such as silicon) it can be shown that the forward scattered wave Ψ^m for the m^{th} -slice is given by (Chen & Van Dyck, 1997):

$$\Psi^m = \left(\prod_{j=1}^{m-1} e^{2\pi i \hat{k}_j \varepsilon} \right) \Psi_p \quad \dots (2)$$

with Ψ_p being the incident wavefunction at the specimen entrance surface. The exponential operator in Equation 2 represents evolution of the wavefunction as it propagates between neighbouring slices. It has been shown that a second order expansion of the operator is sufficient for accurate simulation of EBSD patterns under SEM beam voltages (Liu et al., 2016). Expanding Equation 1b to second order:

$$\hat{k}_j = K_o + \frac{\nabla_{xy}^2}{8\pi^2 K_o} - \frac{\nabla_{xy}^4}{128\pi^4 K_o^3} + \frac{\sigma U_j}{2\pi} \left(1 - \frac{\sigma U_j}{4\pi K_o} \right) - \sigma \left(\frac{\nabla_{xy}^2 U_j + U_j \nabla_{xy}^2}{32\pi^3 K_o^2} \right) - \frac{1}{64\pi^4 K_o^3} \frac{\partial^4}{\partial x^2 \partial y^2} \quad \dots (3a)$$

and so:

$$e^{2\pi i(\hat{k}_j - K_o)\varepsilon} \approx o(\mathbf{R})p_2(\mathbf{R})p_1(\mathbf{R})q(\mathbf{R}) \quad \dots (3b)$$

$$q(\mathbf{R}) = \exp \left[i\sigma U_j \varepsilon \left(1 - \frac{\sigma U_j}{4\pi K_o} \right) \right] \quad \dots (3c)$$

$$p_1(\mathbf{R}) = \exp \left(i\varepsilon \frac{\nabla_{xy}^2}{4\pi K_o} \right) ; p_2(\mathbf{R}) = \exp \left(-i\varepsilon \frac{\nabla_{xy}^4}{64\pi^3 K_o^3} \right) \quad \dots (3d)$$

$$o(\mathbf{R}) = \exp \left[-i\varepsilon \left(\sigma \frac{\nabla_{xy}^2 U_j + U_j \nabla_{xy}^2}{16\pi^2 K_o^2} + \frac{1}{32\pi^3 K_o^3} \frac{\partial^4}{\partial x^2 \partial y^2} \right) \right] \approx \exp \left[-i\varepsilon \sigma \left(\frac{\nabla_{xy}^2 U_j + U_j \nabla_{xy}^2}{16\pi^2 K_o^2} \right) \right] \quad \dots (3e)$$

where $\nabla_{xy}^4 = \frac{\partial^4}{\partial x^4} + \frac{\partial^4}{\partial y^4}$. In Equation 3b a constant phase term $\exp(-2\pi K_o \varepsilon)$ has been included to simplify the operator expansion (Chen & Van Dyck, 1997), but which otherwise has no effect on the calculated beam intensities. $q(\mathbf{R})$ is a modified phase grating function, $p_1(\mathbf{R})$ is the standard propagator function in conventional multislice (Kirkland, 2010) and $p_2(\mathbf{R})$ is a higher order propagator function. The propagator functions represent a convolution in real space and are therefore more efficiently calculated in reciprocal space (Kirkland, 2010). The Fourier transforms (FT) are given by (see (Kirkland, 2010) for a derivation for $p_1(\mathbf{R})$; the result for $p_2(\mathbf{R})$ follows similar lines):

$$FT\{p_1(\mathbf{R})\} = \exp(-i\pi\lambda\varepsilon k^2) ; FT\{p_2(\mathbf{R})\} = \exp \left[-\frac{i\pi\lambda^3\varepsilon}{4} (k_x^4 + k_y^4) \right] \quad \dots (4)$$

where $\mathbf{k} = (k_x, k_y)$ is a reciprocal space vector. Equation 3b follows from Equation 3a and makes use of the general expansion $\exp(A+B) = \exp(A)\exp(B)$, which is only true if the two operators A and B commute, i.e. $AB = BA$ (Kirkland, 2010). The commutative property is however not valid for the phase grating function $q(\mathbf{R})$ and propagator functions $p_1(\mathbf{R})$, $p_2(\mathbf{R})$ so that Equation 3b is only exact to first order (Kirkland, 2010). The so-called ‘mixed’ operator $o(\mathbf{R})$ represents propagation of the electron beam within the specimen potential (as opposed to free space). It does not have a simple Fourier transform and must therefore be evaluated in real space. For the simulations on silicon in this work it is found that $o(\mathbf{R})$ does not have a significant effect on the results, although its effect may be more important for specimens of higher atomic number (Ming & Chen, 2013). If $o(\mathbf{R})$ is neglected the multislice simulations can be performed using Fast Fourier Transforms, which is computationally more efficient than real space calculation of the $\exp[2\pi i(\hat{k}_j - K_o)\varepsilon]$ operator used previously (Cai & Chen, 2012; Liu et al., 2016; Spiegelberg & Rusz, 2015). Nevertheless, in this work $o(\mathbf{R})$ was included for completeness; it was expanded up to second order and evaluated in real space. In order to reduce aliasing artefacts during convolution the bandwidth of $q(\mathbf{R})$, $p_1(\mathbf{R})$ and $p_2(\mathbf{R})$ are limited to two-thirds the Nyquist limit, similar to conventional multislice simulations (Kirkland, 2010).

For EBSD and ECCI simulations we are interested in the backscattered electron intensity, which is dominated by high angle thermal diffuse scattering (Winkelmann et al., 2007; Winkelmann, 2009). This is easily seen for scattering by a single atom, where the elastic and thermal diffuse scattered (TDS) intensities for scattering vector \mathbf{q} are proportional to $|f(\mathbf{q})|^2 \exp(-2Bq^2)$ and $|f(\mathbf{q})|^2 [1 - \exp(-2Bq^2)]$ respectively, with $f(\mathbf{q})$ being the atom scattering factor and B the Debye-Waller factor. At sufficiently large q the TDS contribution becomes greater than the elastic scattering (Pennycook & Jesson, 1991). As an example, for silicon at 5 kV (the simulation conditions in this paper) the cross-over point is at 12° , which is well below the minimum angle of 20° required for backscattering in a standard EBSD measurement with 70° beam incidence angle. As further evidence for the dominance of TDS scattering in a crystal we have used the Chen and Van Dyck (1997) multislice method to simulate the purely elastic backscattered diffraction pattern for [001]-silicon. The simulated results are presented in the Appendix and appear very different to experimental EBSD patterns, thereby confirming that TDS is the dominant mechanism responsible for backscattering.

In the incoherent limit (i.e. large collection solid angle) the TDS inelastic scattered intensity is proportional to (Lugg et al., 2014):

$$\int \left\{ \sum_n |\Psi_n(\mathbf{r})|^2 \right\} V(\mathbf{r}) d\mathbf{r} \quad \dots (5)$$

where $V(\mathbf{r})$ is the interaction potential and $\Psi_n(\mathbf{r})$ is the electron wavefunction with the specimen in the n^{th} -phonon configuration. Equation 5 is integrated over the entire analytical volume. For backscattering, the TDS interaction potential is well approximated by a delta function centred on each atom (Rossouw et al., 1994), so that the TDS backscattered signal from a given atom is proportional to the local electron beam intensity (i.e. the summation term within the curly brackets in Equation 5). The electron beam intensity can be calculated using Equation 2 alongside a quantum excitation of phonons model (Forbes et al., 2010; Forbes & Allen, 2016) for the different phonon configurations.

Plasmon Excitations

In this section the Monte Carlo method for simulating plasmon excitations is summarised. The plasmon scattering depth (s), polar (θ) and azimuthal (ϕ) scattering angles are estimated using the following formulae (Mendis, 2019; Barthel et al., 2020):

$$s = -\lambda_p \ln(R_1) \quad \dots (6a)$$

$$\theta = \theta_E \sqrt{\left(\frac{\theta_c^2 + \theta_E^2}{\theta_E^2} \right)^{R_2} - 1} \quad \dots (6b)$$

$$\phi = 2\pi R_3 \quad \dots (6c)$$

where R_1, R_2, R_3 are computer generated linear random variables within the range $[0,1]$, λ_p is the plasmon mean free path and θ_E, θ_c are the characteristic and critical plasmon scattering angles respectively (Egerton, 1996). θ_E can be calculated from $E_p/(2E_o)$, where E_p is the plasmon energy (17 eV for silicon (Mendis, 2019)) and E_o is the primary beam energy. Barthel *et al.* (2020) obtained values of $\lambda_p = 1000 \text{ \AA}$ and $\theta_c = 15 \text{ mrad}$ by fitting simulations to experimental PACBED patterns of $[110]\text{-Si}$ at 300 kV. Extrapolating to 5 kV, the beam voltage used for the present simulations, we obtain $\lambda_p = 16.7 \text{ \AA}$ and $\theta_c = 132 \text{ mrad}$. These values are derived from the fact that λ_p is approximately proportional to E_o and that the critical scattering vector magnitude $q = \sin(\theta_c)/\lambda$ is independent of E_o (Egerton, 1996).

Following propagation of the electron beam to a depth s within the sample the scattering angles θ and ϕ due to plasmon excitation modify the subsequent electron trajectory. The wavefunction must therefore be multiplied by a phase ramp term, $\exp(2\pi i \Delta \mathbf{k}_t \cdot \mathbf{R})$, where $\Delta \mathbf{k}_t$ is the change in transverse wavevector due to plasmon scattering (Barthel *et al.*, 2020). This method has been shown to accurately reproduce the angular distribution of scattering in PACBED patterns (Barthel *et al.*, 2020). A similar approach is therefore adopted here, i.e. at the slice m where plasmon scattering takes place the wavefunction Ψ^m (Equation 2) is multiplied by $\exp(2\pi i \Delta \mathbf{k}_t \cdot \mathbf{R})$. $\Delta \mathbf{k}_t$ is rounded to the nearest pixel of the multislice supercell in reciprocal space, to comply with the periodic boundary conditions of the simulation and avoid aliasing artefacts (Barthel *et al.*, 2020). The large θ_c value of 132 mrad at 5 kV can also pose problems with the available bandwidth for the multislice supercell, especially when multiple scattering is involved. To mitigate this an upper θ limit of $50\theta_E$ (i.e. 85 mrad or nearly twice the $\{220\}$ Bragg angle) is imposed. This does not lead to a significant error since the cross-section at a scattering angle of $\theta = 50\theta_E$ is smaller by four orders of magnitude compared to forward scattering. Implementation of plasmon excitations is computationally more efficient in multislice compared to Bloch waves, since for the latter the Bloch wave coefficients and excitations must be re-calculated after each plasmon event, which is more time consuming. However, in all cases inclusion of plasmons increases the overall simulation time compared to standard calculations for elastic and phonon scattering only.

EBSD and ECCI simulations

EBSD and ECCI simulations are carried out on a $[001]\text{-silicon}$ specimen using a 5 kV electron beam. 5 kV, rather than a higher beam voltage, was selected in order to achieve a reasonable computation time for the EBSD simulations. The shorter plasmon mean free path at 5 kV requires a smaller supercell thickness for examining the role of multiple plasmon scattering on EBSD contrast. Kirkland's atom scattering factors (Kirkland, 2010) were used to calculate the projected potential of the supercell slices. The quantum excitation of phonons model (Forbes *et al.*, 2010; Forbes & Allen, 2016), with 0.078 \AA root mean square uncorrelated atom displacement (Kirkland, 2010), is used to model phonon scattering. Plasmon excitations are simulated using the method described previously. In all simulations only the TDS backscattered signal is calculated via Equation 5, and assuming a delta function interaction potential (Rossouw *et al.*, 1994). The TDS backscattered signal is therefore proportional to the local electron beam intensity (i.e. $|\Psi^m|^2$ in Equation 2) at the backscattering atom (Picard *et al.*, 2014; Winkelmann *et al.*, 2007; Winkelmann, 2008, 2009; Callahan *et al.*, 2013; Pascal *et al.*, 2018).

EBSD calculations are based on the principle of reciprocity (Winkelmann, 2008). As illustrated schematically in Figure 1a, backscattering from an atom ‘P’ can take place in many directions, but only those multiple scattered electrons that exit the sample in the direction of the EBSD camera will be detected. Each pixel in the (far-field) EBSD camera corresponds to backscattered electrons that share a common wavevector. By reciprocity, the backscattered signal from atom ‘P’ is therefore proportional to the local electron beam intensity at ‘P’ with the EBSD detector pixel as the source, which is in the far-field and therefore effectively corresponds to an incident plane wave with wavevector along the direction from pixel to sample. Strictly speaking the backscattered signal must also include a weighting term due to the energy-depth distribution of the incident electrons prior to backscattering (Pascal et al., 2018), although this is ignored in the simplified reciprocity model which only focuses on the outgoing electron trajectory following backscattering. Each pixel in an EBSD pattern represents a unique incident wavevector that must be calculated separately, i.e. the incident plane wave is propagated into the sample and the local electron beam intensity at every atom is summed and assigned to the corresponding pixel in the EBSD detector (Equation 5). To avoid aliasing artefacts the EBSD pattern is sampled on the same 256×256 pixel reciprocal space grid as the (square) multislice supercell, which has a real space linear dimension of 27.15 \AA or $5a_0$, where a_0 is the lattice parameter of the silicon unit cell. The slice thickness was $a_0/4$ or 1.36 \AA . Due to symmetry only $1/8^{\text{th}}$ of the [001]-silicon EBSD pattern was simulated, and the rest filled in using mirror reflection. The supercell thickness was 100 \AA . With a plasmon mean free path (λ_p) of 16.7 \AA this corresponds to, on average, ~ 6 plasmon scattering events. The energy loss for this number of plasmon excitations is sufficiently small to be ignored, the relative change in electron wavenumber being only $\sim 1\%$. Therefore, only the plasmon scattering angle, and not the energy loss, was included in the simulations. Other ionisation events, such as the Si L- and K-edges, were ignored due to the much smaller cross-sections (Egerton, 1996; Vos & Winkelmann, 2019). Experimentally it is known that the useful information in an EBSD pattern originates from within the first few nanometres (or tens of nm) of the specimen surface (Zaefferer, 2007; Chen et al., 2011). Therefore, as will become clear from the results, a supercell thickness of 100 \AA at 5 kV is sufficient to capture the essential physics of EBSD contrast.

The ECCI intensity profile for a $\frac{1}{2}[110]$ Burgers vector screw dislocation is also simulated. The supercell for multislice simulation was generated in two steps. First a [001]-oriented silicon supercell was constructed with the screw dislocation lying in the plane of the specimen (Figure 1b). At any given point the atomic displacement, $u(\omega)$, is along the dislocation line direction and is expressed as:

$$u(\omega) = \frac{b\omega}{2\pi} \dots (7)$$

where b is the Burgers vector magnitude and ω is the angle measured with respect to the $(1\bar{1}1)$ slip plane with dislocation core at the origin (Hull & Bacon, 2001). Next the supercell was tilted away from the [001] zone-axis by 12.9° (equivalent to five Bragg angles for the 220 reflection), with the dislocation line as the tilt axis. In this geometry the (220) planes are end-

on and the strongest Bragg reflections are along the $\mathbf{g} = \pm 220$ systematic row (symmetry orientation). The thickness of this new supercell was 100 Å with the dislocation at a depth of 50 Å. This dislocation depth was chosen since it corresponds to, on average, only three plasmon excitations for a 5 kV beam; dislocations buried significantly deeper within the sample cannot be simulated using our method, since we do not take into account large energy losses, such as ionisation, which are more probable at greater depths. A larger supercell dimension of 217.24 Å ($40a_0$) with 1024 pixel sampling was used so that aliasing artefacts caused by the long range elastic strain field of the dislocation are minimised. The ECCI signal was calculated by propagating the incident SEM probe into the sample and summing the local electron beam intensity at each atom position (Equation 5). The summed value is proportional to the backscattered ECCI signal for that probe position (assuming the detector solid angle is sufficiently large that channeling of the electrons after backscattering can be neglected). By ‘rastering’ the SEM probe over the sample surface an ECCI image or profile can be constructed. An ECCI profile was calculated by scanning a 5 kV, 10 mrad semi-convergence angle probe across the dislocation in steps of 10 Å. All electron optic aberrations of the probe were set to zero. The supercell slice thickness was $a_0/4$ or 1.36 Å. It is computationally expensive to simulate the full, long range strain field of the dislocation, which can extend to several tens of nanometres (Picard et al., 2014; Kriaa et al., 2019). Instead the focus is on simulating the dislocation core region, which in real materials is of potential interest due to dissociation into partial dislocations ((Hull & Bacon, 2001; Balk & Hemker, 2001; Mendis et al., 2006). The core region is also not accessible in conventional Bloch wave ECCI simulations (Picard et al., 2014; Kriaa et al., 2019), due to the large strain fields and reliance on the column approximation (Hirsch et al., 1965).

Results and Discussion

EBSD patterns

Figure 2a is the [001]-Si EBSD pattern simulated with only phonon scattering, i.e. plasmon scattering was not included. Five phonon configurations were averaged. Kikuchi bands as well as excess and defect Kikuchi lines (arrowed) are visible. In Bloch wave simulations, due to the phenomenological treatment of phonon scattering, the atom scattering factor must be modified to reproduce the anisotropy of Kikuchi line intensities (Winkelmann, 2008). Multislice simulations however have no such limitation, and therefore better reproduce the expected intensities. Figure 2b shows the simulated [001]-Si EBSD pattern with both phonon and plasmon scattering. A total of 50 plasmon/phonon configurations were simulated for each EBSD pixel. The Kikuchi lines are barely visible, and the contrast of the Kikuchi bands are also a lot weaker. The EBSD patterns for ‘zero’ energy loss as well as one, two, three, four and six plasmon events are shown in Figures 2c-2h respectively (here ‘zero’ energy loss includes the phonon losses during backscattering as well as propagation to the specimen surface). The ‘energy filtered’ EBSD patterns were taken from the same simulation data set as Figure 2b. The Kikuchi band contrast increases between ‘zero’ energy loss (Figure 2c) and one plasmon event (Figure 2d), but decreases for higher order plasmon scattering, such that by six plasmon events (Figure 2h) even the Kikuchi bands are barely visible. This trend of maximum contrast at an energy loss greater than the recoil energy is consistent with experimental results on energy filtered EBSD (Deal et al., 2008; Vos & Winkelmann, 2019). It should be noted that in the

simulation only the number of plasmon events as the backscattered electron leaves the specimen is recorded, while in experiment what is measured is the absolute energy, which also includes any energy loss prior to the backscattering event. This means that the maximum contrast measured by experiment will be shifted to higher energy losses compared to simulation.

Figure 3 shows the number of TDS backscattering events contributing to the EBSD pattern of a given energy plotted as a function of specimen depth. For visual clarity only results for ‘zero’ loss, double plasmon and six plasmon events following backscattering are plotted. ‘Zero’ loss backscatter events occur close to the beam entrance surface, but as the energy loss increases the distribution broadens and shifts deeper into the solid. This is consistent with the trends expected of a Poisson distribution. Kikuchi band contrast is a result of phonon scattering, which is estimated to have a longer mean free path compared to elastic or plasmon scattering (Vos & Winkelmann, 2019). Since ‘zero’ loss backscatter events are confined to the near-surface region, there is much less phonon scattering that occurs as the electrons escape the solid. Consequently, for good Kikuchi band contrast the backscatter event must occur deeper within the material, a criterion that is satisfied at higher energy loss. However, there is a trade off since beyond a certain number of plasmon scattering events the contrast starts decreasing again due to the so-called plasmon ‘de-channeling’ effect (Mendis et al., 2019). For strong phonon scattering the electron beam must first channel along the atom columns. During plasmon excitation the incident electron is deflected on average by θ_E , which is relatively small for a single plasmon event (e.g. 1.7 mrad at 5kV). For multiple plasmon scattering however the cumulative effect of the beam deflection is such that the channeling, and hence Kikuchi band contrast, is diminished.

The ratio (θ_B/θ_E) , where θ_B is the Bragg angle, can be taken as a simple measure of the strength of plasmon de-channeling. The larger θ_E is compared to θ_B , the stronger the de-channeling during plasmon excitation; recall that a variation in incidence angle by $\sim\theta_B$ is sufficient to change the channeling behaviour of the incident electrons (Hirsch et al., 1965). It is easy to show that (θ_B/θ_E) is proportional to \sqrt{E} , where E is the energy of the backscattered electron. Therefore, plasmon scattering should have a greater effect on Kikuchi band contrast at lower electron energies. In the simulations we only considered energies close to the 5 keV primary beam energy, although the energy spectrum of backscattered electrons covers the full range of values (Deal et al., 2008). This is due to energy loss of the incident electrons prior to the backscattering event, as well as the fact that backscatter electrons can escape from depths far larger than the 100 Å considered in the present simulations. Therefore, it is necessary to simulate all allowed electron energies and not just small energy losses (Callahan et al., 2013; Pascal et al., 2018). However, those electrons with energy significantly less than the primary beam energy are likely to have been backscattered from deeper within the specimen. While escaping the solid the electrons will therefore, on average, undergo multiple plasmon scattering. Since the ratio (θ_B/θ_E) is also smaller for these electrons they are likely to generate very little Kikuchi band contrast and therefore only contribute to the background signal. This is probably the reason why the relative intensity of the featureless background in experimental EBSD patterns increases with the primary beam energy, as demonstrated for a silicon [001] single crystal in Figure 4. Higher primary beam energies have a larger spread in backscattered energy values, and since Kikuchi band contrast is contained predominantly in those electrons

with small energy losses, there will be more electrons in the ‘tail’ of the energy distribution that contribute to the background signal. Finally, we note that EBSD is related to electron channeling patterns (ECP) through the principle of reciprocity (Joy et al. 1982, Wells 1999), so that plasmon excitations should have a similar effect on the latter.

ECCI profile of a screw dislocation

Figure 5a shows the ECCI profile across the $\frac{1}{2}[110]$ screw dislocation obtained from a simulation that included phonon, but no plasmon, scattering. Ten phonon configurations were averaged. The ECCI profile shows a left-right asymmetric intensity, consistent with previous experimental and simulated results (Wilkinson & Hirsch, 1997; Zaefferer & Elhami, 2014; Kriaa et al., 2019). The asymmetry is due to the dislocation strain field causing a reversal in lattice plane bending, and therefore electron beam channeling, either side of the dislocation. There is also a narrow (~ 30 Å width) peak in ECCI intensity at the dislocation core, which to our knowledge has not been reported previously, probably due to the resolution being better in the simulation compared to experiment and/or signal-to-noise issues arising from a large background in the experiment. Changing the sense of the dislocation displacement (Equation 7) reversed the left-right asymmetry of the ECCI intensity profile, but the small peak at the dislocation core remained.

Figure 5b is the ECCI profile after including plasmon losses; 100 phonon/plasmon configurations were averaged. Unlike EBSD patterns there is no significant change compared to the pseudo-elastic result (Figure 5a). The ECCI profiles for ‘zero’ loss and one to six plasmon losses are shown in Figures 5c-5i respectively (note that only plasmon events prior to backscattering are recorded). Interestingly all the ‘energy filtered’ ECCI profiles look very different to Figure 5b, indicating that there is not one dominant contributing energy loss. This can be understood by comparing plasmon de-channeling with the change in channeling conditions induced by the dislocation strain field. The change in deviation parameter s_d for a reciprocal vector \mathbf{g} due to a displacement vector field \mathbf{u} is (Kriaa et al., 2019; Hirsch et al., 1965):

$$s_d = \mathbf{g} \cdot \frac{\partial \mathbf{u}}{\partial z} \quad \dots (8)$$

For our simulations the 220 reflection \mathbf{g} is parallel to \mathbf{u} . The magnitude of \mathbf{u} is given by Equation 7 and z represents the spatial coordinate along the electron optic axis. Similarly, the deviation parameter vector \mathbf{s}_g for an incident wavevector \mathbf{K}_0 in a perfect crystal satisfies (Spence & Zuo, 1992):

$$2\mathbf{K}_0 \cdot \mathbf{s}_g = K_0^2 - |\mathbf{K}_0 + \mathbf{g}|^2 \quad \dots (9)$$

It follows that for normal incidence the change in deviation parameter (s_p) following plasmon scattering is approximately:

$$s_p = -\mathbf{g} \cdot \frac{\Delta \mathbf{k}_t}{K_0} \quad \dots (10)$$

Equation 10 is evaluated assuming \mathbf{g} is parallel to $\Delta \mathbf{k}_t$ and $|\Delta \mathbf{k}_t| \approx K_0 \theta_E$ (small angle approximation). The ratio $|s_d/s_p|$ is then a simple measure for evaluating the role of plasmon scattering on ECCI contrast. If the ratio is large plasmon de-channeling is relatively minor and the ECCI contrast will mainly be due to the dislocation strain field. Figure 6 maps the logarithm of the $|s_d/s_p|$ ratio as a function of position in the (110) plane (see Figure 1b), with the screw dislocation end-on and at the origin of the plot. Plasmon de-channeling is only significant in regions where $|s_p| > |s_d|$, i.e. when the logarithm of $|s_d/s_p|$ has a negative value. From Figure 6 this condition is satisfied in only small regions of the 100 Å thick simulation ‘volume’. Furthermore, close to the dislocation core region the $|s_d/s_p|$ ratio is several orders of magnitude large. For dislocations close to the beam entrance surface the ECCI contrast will therefore be dominated by the intrinsic strain field. Plasmon losses have a negligible effect, as confirmed by the simulation results in Figure 5. Backscattered electrons with energy significantly lower than the primary beam energy are likely to be generated deeper within the sample, where the dislocation strain field is small. Therefore, these electrons do not produce any dislocation contrast, and will only contribute a featureless background signal, similar to EBSD. Removal of this background, using for example a Timepix direct electron detector with energy thresholding [30], would improve the peak-to-background ratio of the ECCI signal and potentially enable analysis of the dislocation core structure (e.g. the small peak in Figures 5a and 5b).

Conclusions

The multislice method of Chen and Van Dyck has been extended to include plasmon losses and is used to simulate EBSD patterns and ECCI intensity profiles of a $\frac{1}{2}[110]$ screw dislocation in [001]-silicon. The EBSD simulations reproduce many of the trends observed experimentally. In particular, it is found that the Kikuchi band contrast is maximum for small energy loss (i.e. few plasmon scattering events) following backscattering. This can be understood by considering the competition between phonon scattering of the outgoing backscatter wave and plasmon de-channeling. For strong phonon scattering and Kikuchi band contrast the backscatter event must take place deeper within the sample. However, this must be balanced by the fact that the probability for plasmon excitation is also greater; the cumulative effect of many plasmon events with characteristic scattering angle θ_E is to de-channel the backscattered wave off the atom columns, thereby decreasing phonon scattering. For the same reason it follows that those backscattered electrons with energy significantly lower than the primary beam energy will have very little Kikuchi band contrast and therefore contribute mainly to the background signal in an EBSD pattern. Simulated ECCI profiles for dislocations on the other hand show a very different behaviour. Here plasmon losses have a negligible effect on the ECCI profile, because the lattice plane bending by the dislocation strain field has a greater effect on electron beam channeling, and hence backscattering, compared to the plasmon scattering angle θ_E .

Acknowledgements

This research was partly supported under the Discovery Projects funding scheme of the Australian Research Council (Project No. FT190100619) and the North East Centre for Energy Materials funded by EPSRC, UK (Grant No. EP/R021503/1).

Appendix

In this section we compare simulated elastic backscattered diffraction patterns with experimental EBSD patterns. The elastic backscattered wave can be calculated using the Chen and Van Dyck (1997) multislice method. The solution has a simple form (see Equation 48 in Chen & Van Dyck, 1997) in the ‘single backscattering’ approximation, where multiple backscattering events are assumed to be negligible. Note that since the backscattering is purely elastic (i.e. TDS scattering is only in the forward direction) the backscattered waves from different specimen depths can interfere with one another (Chen & Van Dyck, 1997). Fourier transforming the net wavefunction at the specimen surface gives the backscattered diffraction pattern.

Figure A1a shows the simulated [001]-silicon elastic backscattered diffraction pattern for a 5 kV, aberration-free, 10 mrad semi-convergence angle probe at normal incidence. The specimen thickness was 100 Å and ten phonon configurations were averaged. Plasmons were not included in the simulations. The intensity of the Kikuchi bands are much weaker compared to the Bragg reflections (the intensity is plotted on a logarithmic scale). The diffraction pattern for the forward scattered wave at the specimen exit surface (Figure A1b) on the other hand displays more prominent Kikuchi bands along with Bragg reflections. Experimental EBSD patterns (e.g. Figure 4) are dominated by Kikuchi band contrast and only occasionally show weak RHEED (reflection high energy electron diffraction) spots (Vespucci et al., 2015). This is inconsistent with Figure A1a and indicates that high angle TDS is the dominant contribution to EBSD patterns even in crystalline specimens.

References

- Balk, T.J. & Hemker, K.J. (2001). High resolution transmission electron microscopy of dislocation core dissociations in gold and iridium. *Phil. Mag. A* **81** 1507-1531.
- Barthel, J., Cattaneo, M., Mendis, B.G., Findlay, S.D. & Allen, L.J. (2020). Angular dependence of fast-electron scattering from materials. *Phys. Rev. B* **101** 184109 (9 pages).
- Britton, T.R., Maurice, C., Fortunier, R., Driver, J.H., Day, A.P., Meaden, G., Dingley, D.J., Mingard K. & Wilkinson, A.J. (2010). Factors affecting the accuracy of high resolution electron backscatter diffraction when using simulated patterns. *Ultramicroscopy* **110** 1443-1453.
- Burch, M.J., Fancher, C.M., Patala, S., De Graef, M. & Dickey, E.C. (2017). Mapping 180° polar domains using electron backscatter diffraction and dynamical scattering simulations. *Ultramicroscopy* **173** 47-51.

Cai, C. & Chen, J. (2012). An accurate multislice method for low-energy transmission electron microscopy. *Micron* **43** 374-379.

Callahan, P.G. & De Graef, M. (2013). Dynamical Electron Backscatter Diffraction Patterns. Part I: Pattern Simulations. *Microsc. Microanal.* **19** 1255-1265.

Chen, J.H. & Van Dyck, D. (1997). Accurate multislice theory for elastic electron scattering in transmission electron microscopy. *Ultramicroscopy* **70** 29-44.

Chen, J.H., Van Dyck, D. & Op de Beeck, M. (1997). Multislice method for large beam tilt with application to HOLZ effects in triclinic and monoclinic crystals. *Acta Cryst. A* **53** 576-589.

Chen, D., Kuo, J-C. & Wu, W-T. (2011). Effect of microscopic parameters on EBSD spatial resolution. *Ultramicroscopy* **111** 1488-1494.

Cowley, J.M. & Moodie, A.F. (1957). The Scattering of Electrons by Atoms and Crystals. I. A New Theoretical Approach. *Acta Cryst.* **10** 609-619.

Deal, A., Hooghan, T. & Eades, A. (2008). Energy-filtered electron backscatter diffraction. *Ultramicroscopy* **108** 116-125.

Dudarev, S.L., Rez, P. & Whelan, M.J. (1995). Theory of electron backscattering from crystals. *Phys. Rev. B* **51** 3397-3412.

Egerton, R.F. (1996) *Electron Energy-Loss Spectroscopy in the Electron Microscope*, Plenum Press, New York.

Forbes, B.D., Martin, A.V., Findlay, S.D., D'Alfonso, A.J. & Allen, L.J. (2010). Quantum mechanical model for phonon excitation in electron diffraction and imaging using a Born-Oppenheimer approximation. *Phys. Rev. B* **82** 104103 (8 pages).

Forbes, B.D. & Allen, L.J. (2016). Modeling energy-loss spectra due to phonon excitation *Phys. Rev. B* **94** 014110 (9 pages).

Hirsch, P.B., Howie, A., Nicholson, R.B., Pashley, D.W. & Whelan, M.J. (1965) *Electron Microscopy of Thin Crystals*, Butterworths.

Hull, D. & Bacon, D.J. (2001) *Introduction to Dislocations*, Fourth Edition, Butterworth-Heinemann, Great Britain.

Joy, D.C., Newbury, D.E. & Davidson, D.L. (1982). Electron channeling patterns in the scanning electron microscope. *J. Appl. Phys.* **53** R81-122.

Kirkland, E.J. (2010) *Advanced Computing in Electron Microscopy*, Second Edition, Springer, USA.

Kriaa, H., Guitton, A. & Maloufi, N. (2019). Modeling Dislocation Contrasts Obtained by Accurate-Electron Channeling Contrast Imaging for Characterizing Deformation Mechanisms in Bulk Materials. *Materials* **12** 1587 (9 pages).

Lentzen, M. (2017). The refractive index in electron microscopy and the errors of its Approximations. *Ultramicroscopy* **176** 139-145.

Liu, Q.B., Cai, C.Y., Zhou, G.W. & Wang, Y.G. (2016). Comparison of EBSD patterns simulated by two multislice methods. *J. Microscopy* **264** 71-78.

Loane, R.F., Xu, P. & Silcox, J. (1991). Thermal vibrations in convergent-beam electron diffraction. *Acta Cryst. A* **47** 267-278.

Lugg, N.R., Neish, M.J., Findlay, S.D. & Allen, L.J. (2014). Practical Aspects of Removing the Effects of Elastic and Thermal Diffuse Scattering from Spectroscopic Data for Single Crystals. *Microsc. Microanal.* **20** 1078-1089.

Mendis, B.G., Mishin, Y., Hartley, C.S. & Hemker, K.J. (2006). Use of the Nye tensor in analyzing HREM images of bcc screw dislocations. *Phil. Mag.* **86** 4607-4640.

Mendis, B.G. (2019). An inelastic multislice simulation method incorporating plasmon energy losses. *Ultramicroscopy* **206** 112816 (9 pages).

Mendis, B.G. (2020). Theory underpinning multislice simulations with plasmon energy losses. *Microscopy* **69** 173-175.

Ming, W.Q. & Chen, J.H. (2013). Validities of three multislice algorithms for quantitative low-energy transmission electron microscopy. *Ultramicroscopy* **134** 135-143.

Muller, D.A. & Silcox, J. (1995). Delocalization in inelastic scattering. *Ultramicroscopy* **59** 195-213.

Wells, O.C. (1999) Comparison of Different Models for the Generation of Electron Backscattering Patterns in the Scanning Electron Microscope. *Scanning* **21** 368-371.

Pascal, E., Singh, S., Callahan, P.G., Hourahine, B., Trager-Cowan, C. & De Graef, M. (2018). Energy-weighted dynamical scattering simulations of electron diffraction modalities in the scanning electron microscope. *Ultramicroscopy* **187** 98-106.

Pennycook, S.J. & Jesson, D.E. (1991). High-resolution Z-contrast imaging of crystals. *Ultramicroscopy* **37** 14-38.

Picard, Y.N., Liu, M., Lammatao, J., Kamaladasa, R. & De Graef, M. (2014). Theory of dynamical electron channeling contrast images of near-surface crystal defects. *Ultramicroscopy* **146** 71-78.

Rossouw, C.J., Miller, P.R., Josefsson, T.W. & Allen, L.J. (1994). Zone-axis back-scattered electron contrast for fast electrons. *Phil. Mag. A* **70** 985-998.

Schwartz, A.J., Kumar, M., Adams, B.L. & Field, D.P. (2009), *Electron Backscatter Diffraction in Materials Science*, Second Edition, Springer, USA.

Spence, J.C.H. & Zuo, J.M. (1992) *Electron Microdiffraction*, Plenum Press, New York.

Spencer, J.P., Humphreys, C.J. & Hirsch, P.B. (1972). A dynamical theory for the contrast of perfect and imperfect crystals in the scanning electron microscope using backscattered electrons. *Phil. Mag.* **26** 193-213.

Spiegelberg, J. & Rusz, J. (2015). A multislice theory of electron scattering in crystals including backscattering and inelastic effects. *Ultramicroscopy* **159** 11-18.

Vespucchi, S., Winkelmann, A., Naresh-Kumar, G., Mingard, K.P., Maneuski, D., Edwards, P.R., Day, A.P., O'Shea, V. & Trager-Cowan, C. (2015) Digital direct electron imaging of energy-filtered electron backscatter diffraction patterns. *Phys. Rev. B* **92** 205301 (9 pages).

Vos, M. & Winkelmann, A. (2019). Effects of multiple elastic and inelastic scattering on energy-resolved contrast in Kikuchi diffraction. *New J. Phys.* **21** 123018 (19 pages).

Wilkinson, A.J. & Hirsch, P.B. (1997). Electron diffraction based techniques in scanning electron microscopy of bulk materials. *Micron* **28** 279-308.

Winkelmann, A., Trager-Cowan, C., Sweeney, F., Day, A.P. & Parbrook, P. (2007). Many-beam dynamical simulation of electron backscatter diffraction patterns. *Ultramicroscopy* **107** 414-421.

Winkelmann, A. (2008). Dynamical effects of anisotropic inelastic scattering in electron backscatter diffraction. *Ultramicroscopy* **108** 1546-1550.

Winkelmann, A. (2009). Principles of depth-resolved Kikuchi pattern simulation for electron backscatter diffraction. *J. Microscopy* **239** 32-45.

Winkelmann, A. & Vos, M. (2013). The role of localized recoil in the formation of Kikuchi patterns. *Ultramicroscopy* **125** 66-71.

Winkelmann, A. & Nolze, G. (2015). Chirality determination of quartz crystals using Electron Backscatter Diffraction. *Ultramicroscopy* **149** 58-63.

Zaefferer, S. (2007). On the formation mechanisms, spatial resolution and intensity of backscatter Kikuchi patterns. *Ultramicroscopy* **107** 254-266.

Zaefferer, S. & Elhami, N-N. (2014). Theory and application of electron channelling contrast imaging under controlled diffraction conditions. *Acta Mater.* **75** 20-50.

Figures

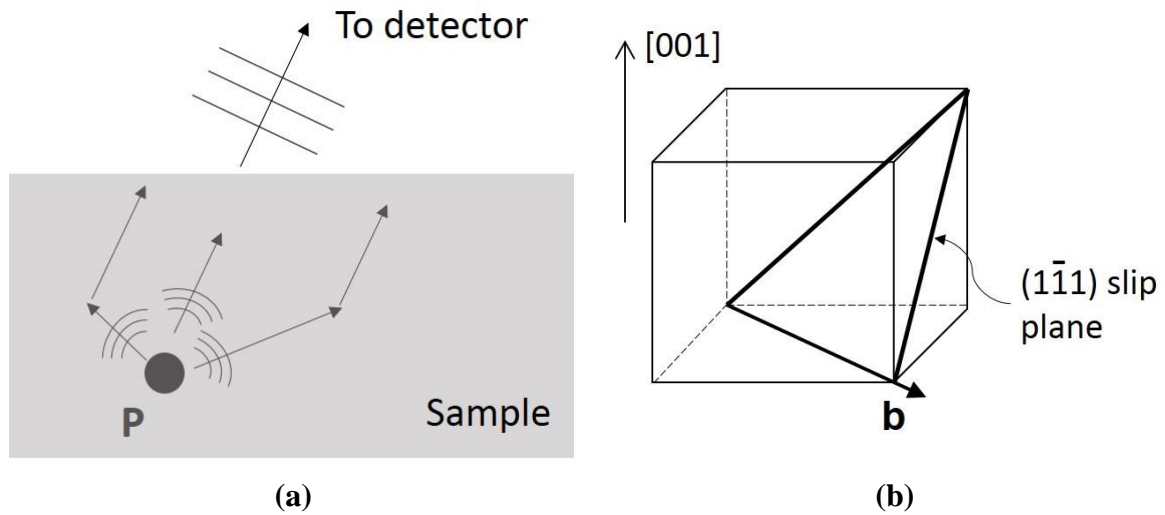
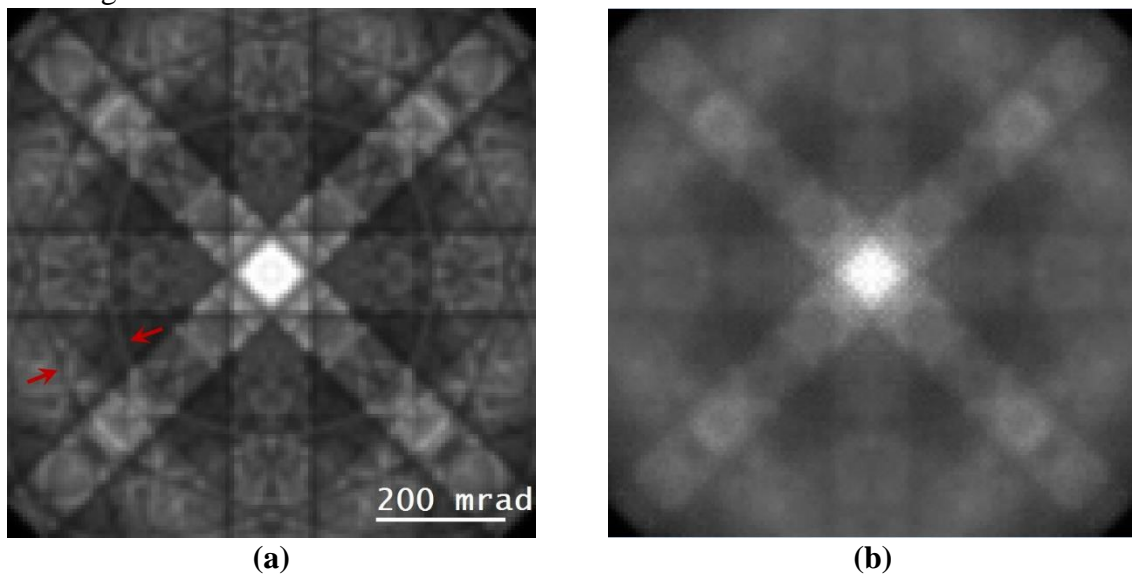


Figure 1: (a) Schematic illustrating backscattering in EBSD. The arcs represent Huygen wavelets due to scattering of the primary beam by atom ‘P’. Multiple scattering can take place within the sample, as indicated by a change in propagation direction of the Huygen wavelets. Those backscattered electrons that exit the sample with a common wavevector in the far-field are detected by a single pixel in the EBSD detector. (b) The geometry of the screw dislocation used for ECCI simulations. The screw dislocation has a $\frac{1}{2}[110]$ Burgers vector **b** and glides on the $(1\bar{1}1)$ slip plane. Note that for a screw dislocation the line vector is along the same direction as the Burgers vector.



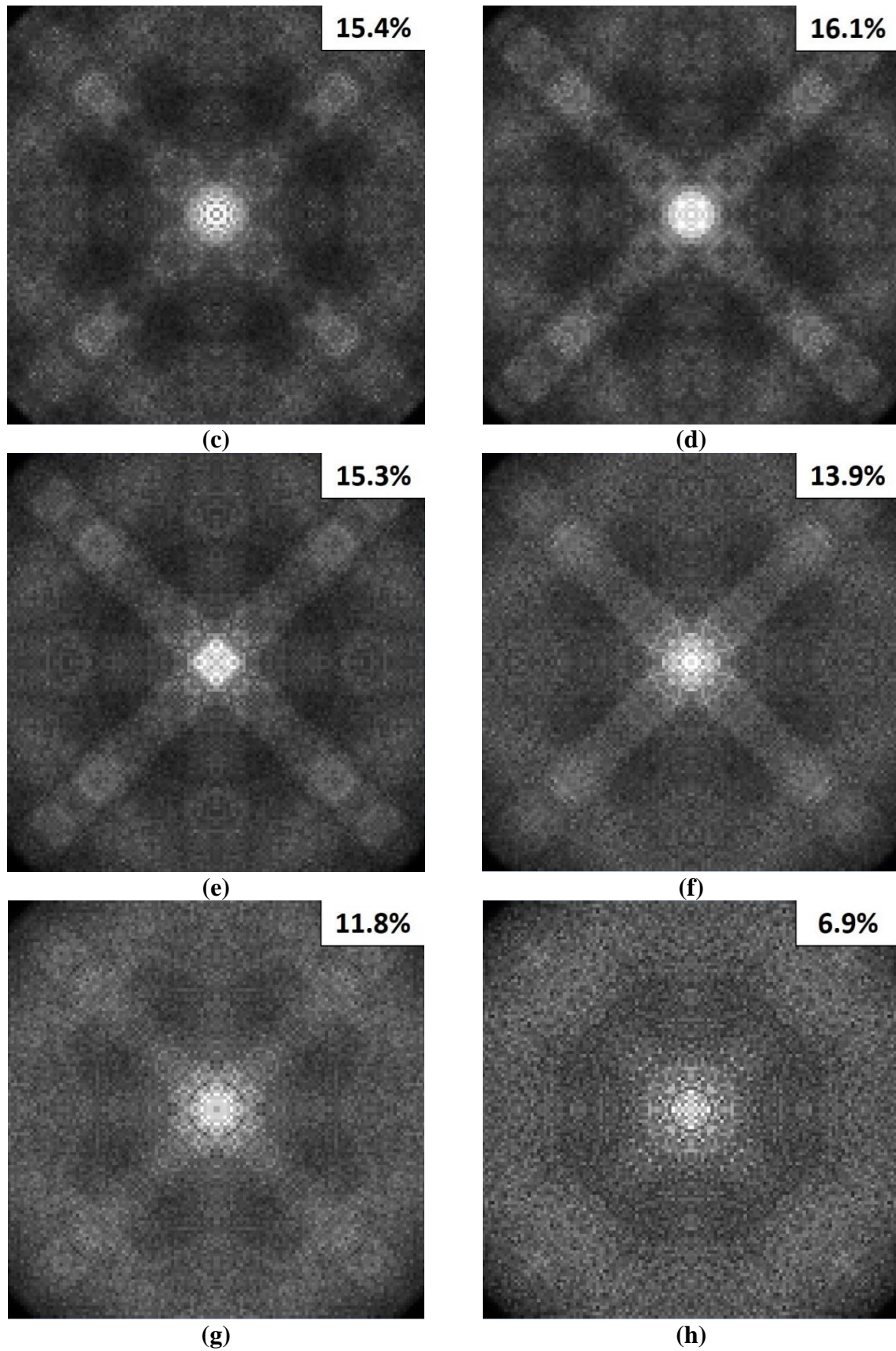


Figure 2: (a) 5 kV [001]-silicon EBSD pattern simulated with only phonon scattering and no plasmon losses. The red arrows denote excess and defect Kikuchi lines. (b) 5 kV [001]-silicon EBSD pattern including plasmon losses. The ‘energy filtered’ EBSD patterns for ‘zero’ loss,

one, two, three, four and six plasmon losses are shown in figures (c) to (h) respectively. The numerical value at the top right hand corner is the percentage contribution of each diffraction pattern to the total intensity in Figure 2b. The dark corners in the diffraction patterns are due to bandwidth limiting in the multislice simulations.

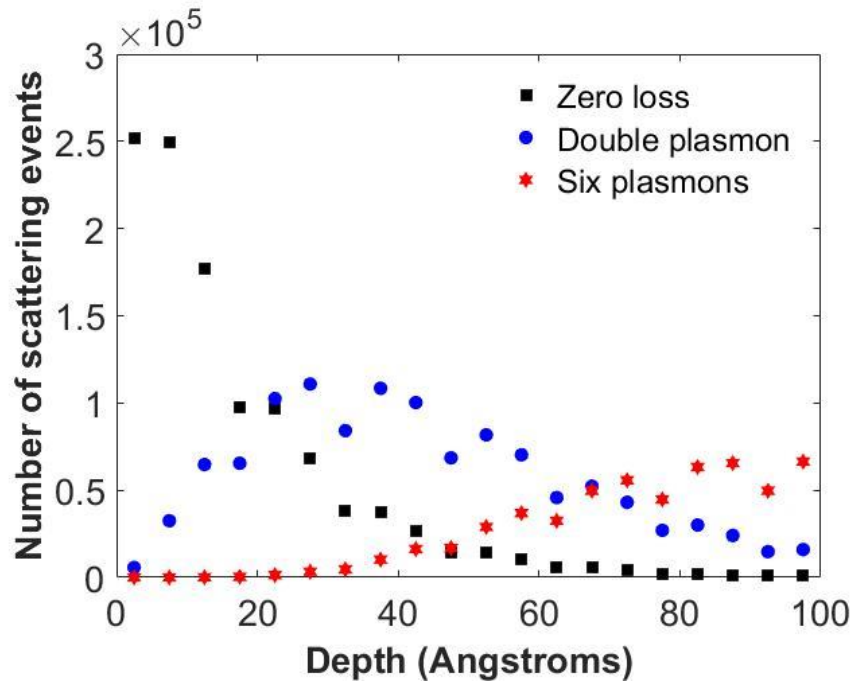
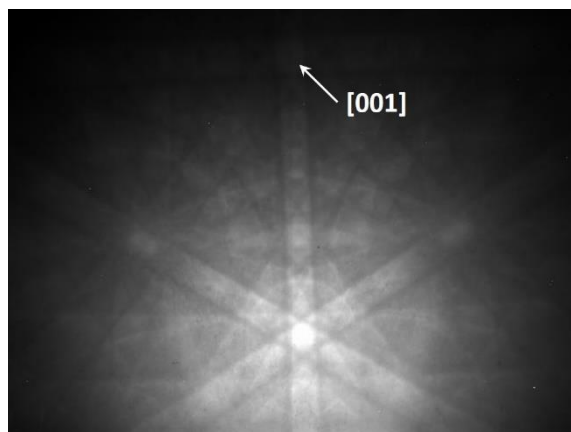
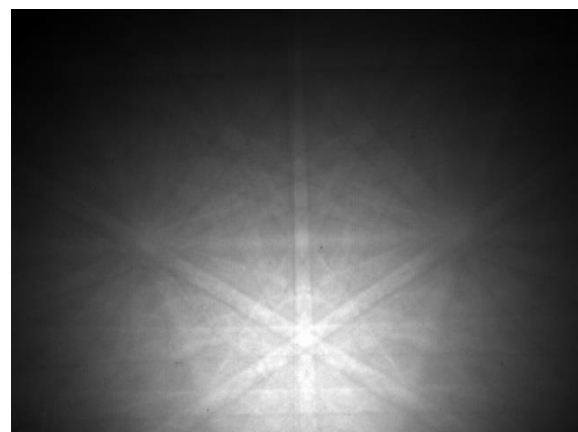


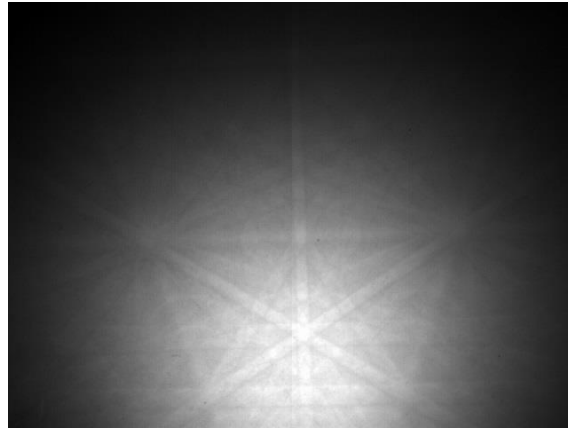
Figure 3: The number of TDS backscattering events of a given energy plotted as a function of specimen depth. The data is extracted from the 5 kV [001]-silicon EBSD simulations (Figure 2) and includes results from 50 plasmon configurations. For clarity only the results for ‘zero’ loss, double and six plasmon energy losses are shown.



(a)

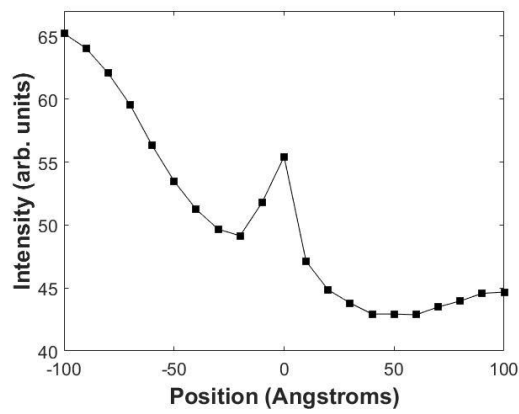


(b)

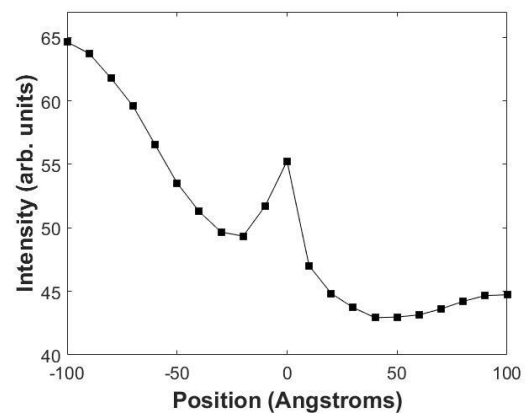


(c)

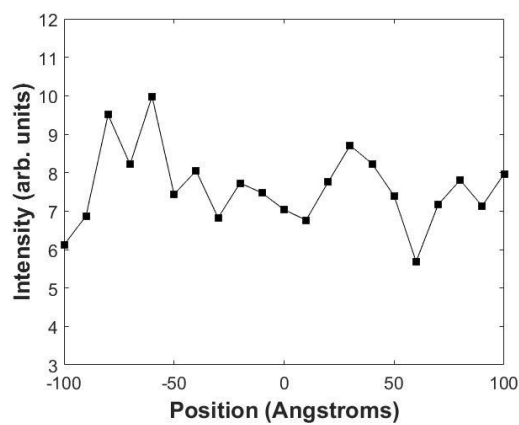
Figure 4: Experimental EBSD patterns from a [001]-silicon single crystal acquired at (a) 5 kV, (b) 15 kV and (c) 25 kV. Only the unprocessed EBSD patterns are displayed, i.e. the background intensity has not been subtracted. Note that due to the 70° tilt of the specimen the [001] zone-axis appears at the top of the EBSD pattern, as indicated in Figure 4a.



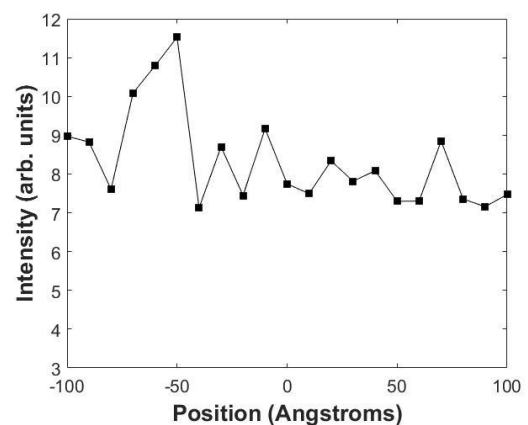
(a)



(b)



(c)



(d)

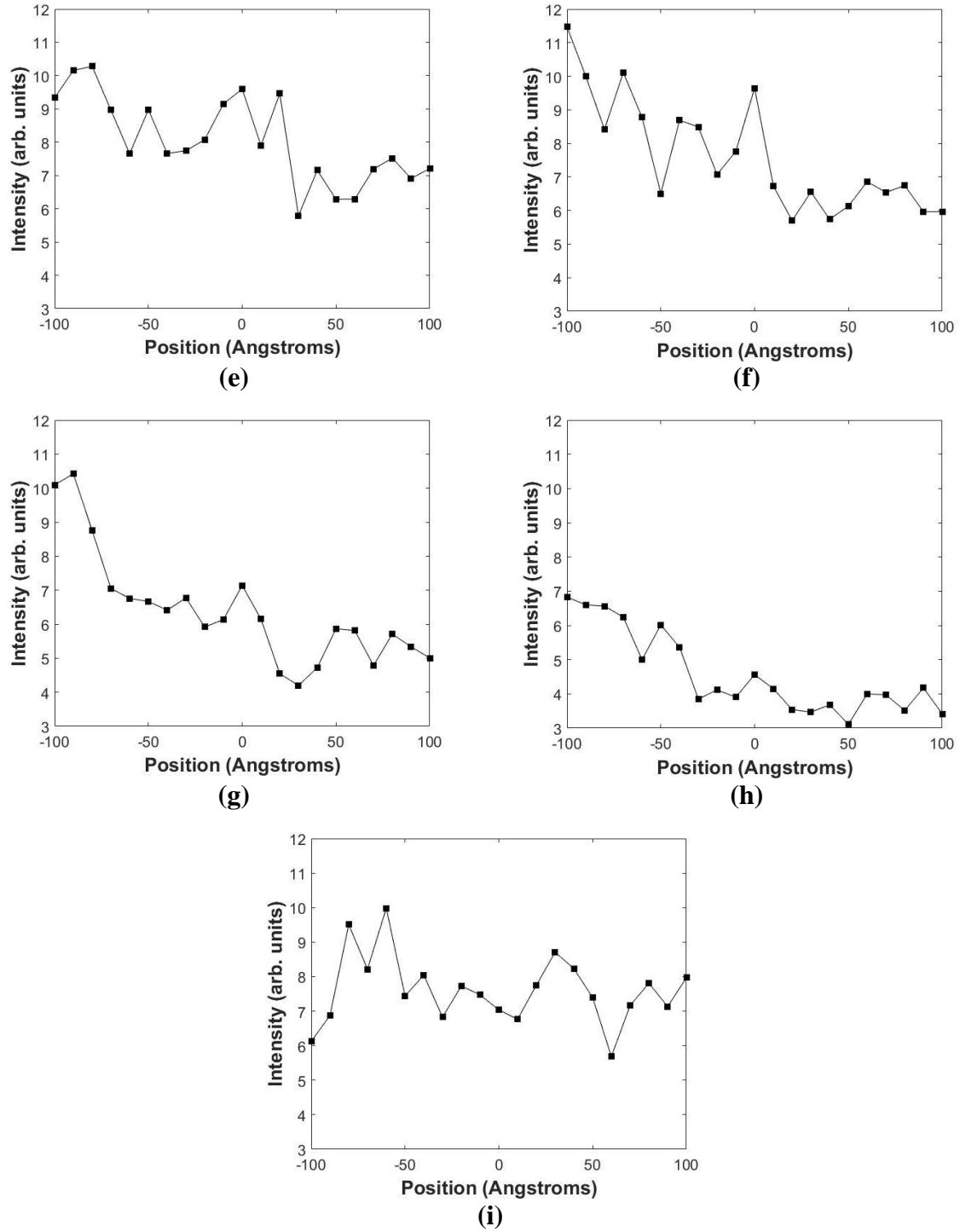


Figure 5: (a) ECCI intensity profile across a $\frac{1}{2}[110]$ screw dislocation in silicon at a depth of 50 Å from the free surface. The sample is tilted for strong $\mathbf{g} = \pm 220$ systematic row excitation in the symmetry orientation. The screw dislocation is at the origin of the graph. The simulation includes only phonon scattering and no plasmon losses. (b) shows the same ECCI profile but with plasmon losses also included. Figures (a) and (b) are plotted on the same intensity scale to aid direct visual comparison. The ‘energy filtered’ ECCI profiles for ‘zero’, one, two, three, four, five and six plasmon losses are shown on the same intensity scale in figures (c) to (i) respectively. In all simulations the 5 kV incident beam had a 10 mrad probe semi-convergence angle and zero electron-optic aberrations.

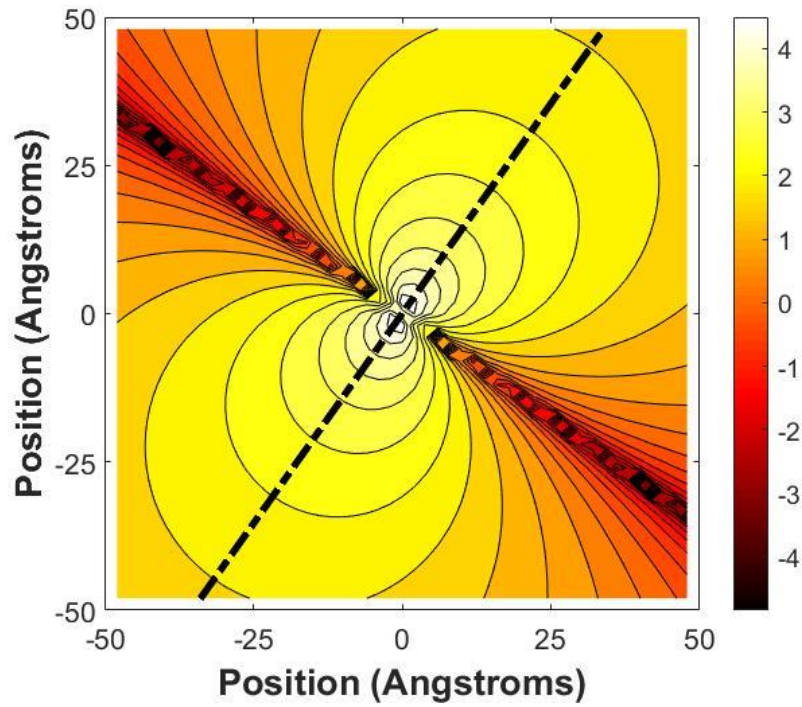


Figure 6: Natural logarithm of the $|s_d/s_p|$ ratio plotted as a function of position. The viewing direction is $[110]$ with the dislocation end-on and at the origin. The dashed line represents the trace of the $(1\bar{1}1)$ slip plane (see Figure 1b).

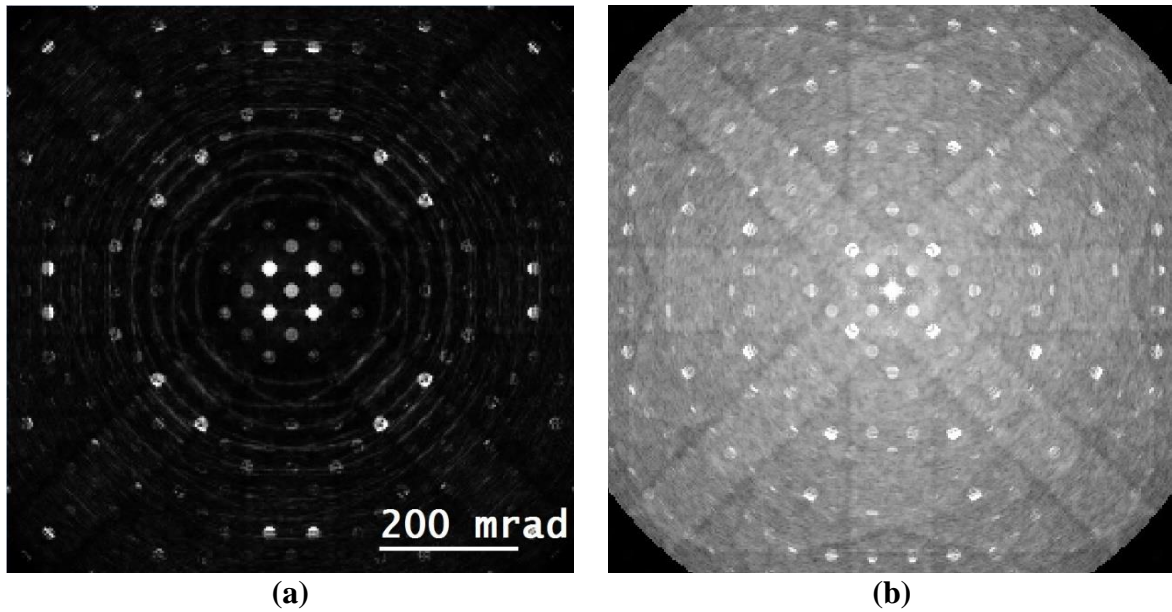


Figure A1: (a) 5 kV elastic backscattered diffraction pattern from a 100 \AA thick, $[001]$ -silicon sample. The forward scattered diffraction pattern is shown in (b). The intensities are displayed on a logarithmic scale and the dark regions at the corners are due to bandwidth limiting in the multislice simulations.